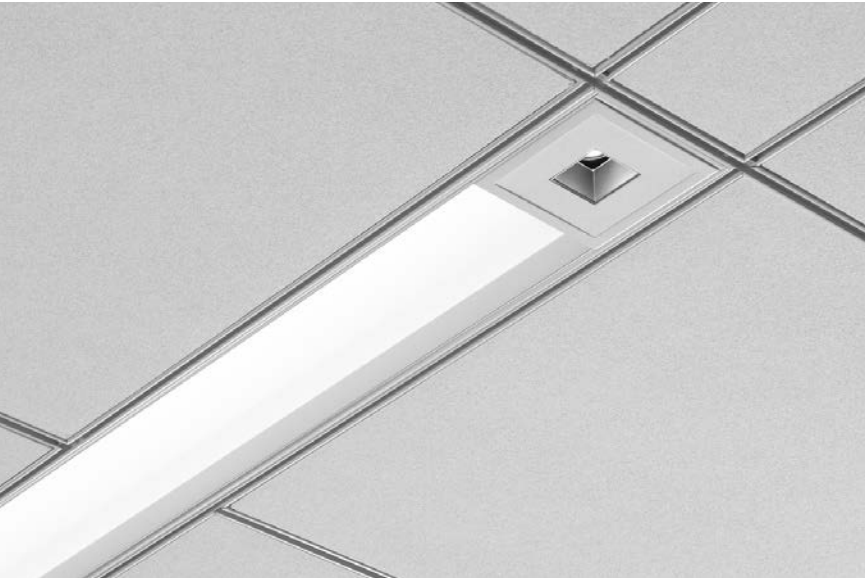


Avenue® 6 + id®

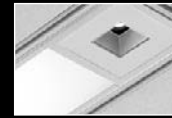
FLUORESCENT ARMSTRONG® TECH ZONE®



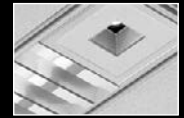
FOCAL POINT®



solid regress trim



flush lens



parabolic louver



clear specular



clear diffuse



black specular



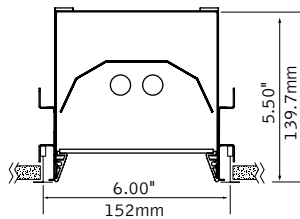
black baffle



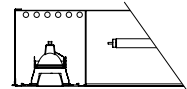
white baffle

DIMENSIONAL DATA

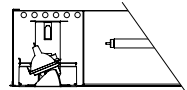
grid mount



downlight



adjustable accent



lamping/shielding options

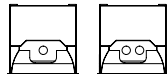
regressed trim



flush lens



parabolic louver



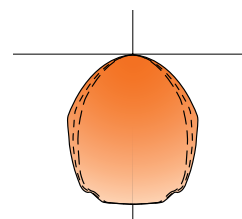
FEATURES

Avenue® 6 is Armstrong® TechZone® compatible.

1 and 2 lamp fluorescent T5/T5HO or T8 combined with (2) 50 watt MR16 modules.

Fluorescent shielding options include corrugated or solid regressed trim, flush lens or parabolic louver.

PERFORMANCE



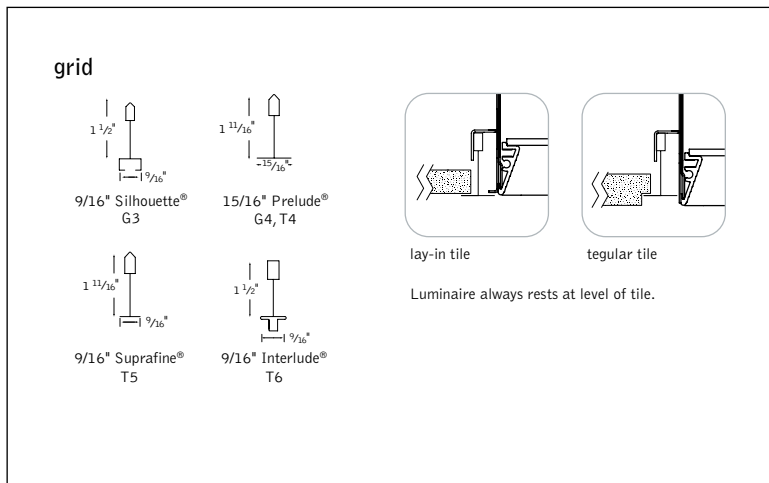
1-Lamp T5HO
67% Efficient
1392 cd @ 125°

PRODUCT OVERVIEW

Lumen Output: 1525-8862lm*
Wattage: 133-280W
Lamping: T5, T5HO, T8, MR16

Visit focalpointlights.com for complete photometric data.

MOUNTING INFORMATION



SPECIFICATIONS

Construction

One-piece 20 Ga. steel housing. Corrugated and solid regress trim constructed of 6063-T5 extruded aluminum finished in Matte Satin White. 20 Ga. steel, universal flange rail finished in Matte Satin White. Housing includes thermally protected (50W max), (T-rated) MR16 modules. Die-cast trim is keyed to housing during relamping via swing clear torsion springs. Torsion springs pull up tight to the ceiling and install in 90° increments. No visible fasteners within the trim. Mechanical light traps eliminate light leaks. Positional brackets supplied as standard. 4' unit weight: 18 lbs., 5' unit weight: 25 lbs.

Optic

22 Ga. steel reflectors finished in High Reflectance White powder coat. Acrylic lens diffuser .118" thick, frosted clear. Parabolic louver: .75"H x 1.5" frequency fabricated of low iridescent, semi-specular premium grade aluminum. Louver can be specified with matte white finish. MR16 optics provide 50° cutoff to the lamp and lamp image. Die-cast parabolic cone ensures glare free optics. Clear Specular "CS", Clear Diffuse "CD", Black Specular "BS", Black Baffle "BB" and White Baffle "WB" are painted finishes.

Adjustment Mechanism

Auto Memory for relamping, lamp returns to preset aiming position. Mechanism is stainless steel with, matte black finish, and holds lamp and lenses independently. Hot aiming with Phillips screwdriver allows for 363° rotation and 0-45° vertical tilt when Adjustable Accent "AA" is specified. Hand and trim rotate with the lamp so as not to block the beam of light. Mechanism pulls down from recessed housing for quick and easy relamping. Vertical angle and horizontal rotation indicators display positioning. Tempered soft focus lens supplied as standard. Lens tray can hold up to three accessories, up to 3/8" thick. Lenses remain undisturbed during relamping.

Electrical

Luminaires are individually wired for specified circuits. Thru-wiring not available. Electronic ballasts are thermally protected and have a Class "P" rating. Porcelain bi pin socket with #18 Teflon leads with keyed quick connection. Thermally protected, guards against over-heating and misuse of insulation. Transformers available in 120V or 277V electronic. Consult factory for dimming specifications and availability.

Labels

UL and cUL listed.

Finish

Polyester powder coat applied over a 5-stage pre-treatment.

ORDERING

Luminaire Series		FAV6
Avenue 6	FAV6	
Shielding		
Corrugated Regressed Trim Frst.Lns	CR	
Solid Regressed Trim Frosted Lens	SR	
Flush Frosted Lens	FL	
Parabolic Louver	PL	
(T5/T5HO only)		
White Painted Parabolic Louver	PW	
(T5/T5HO only)		
Corrugated Regressed Trim with MicroGlow™ Lens	CRM	
Solid Regressed Trim with MicroGlow Lens	SRM	
Flush MicroGlow Lens	FLM	
Lamping		
One Lamp T5	1T5	
One Lamp T5HO	1T5HO	
One Lamp T8	1T8	
Two Lamp T5	2T5	
Two Lamp T5HO	2T5HO	
Two Lamp T8	2T8	
Circuits		
Dual Circuit	2C	
(Fluor. switched separately from incandescent)		
Three Circuit	3C	
(Circ. 1 & Circ. 2 Fluor./Circ. 3 Incandescent)		
Voltage		
120 Volt	120	
277 Volt	277	
Ballast		
(Consult factory for 5' dimming options)		
Electronic Program Start <10% THD	S	
0-10V	D7	
Lutron 1% 3-wire	DH	
Lutron 1% H-Series	DK	
Ceiling Configurations		
9/16" Silhouette Slot-tee Tegular	G3	
15/16" Prelude Lay-in	G4	
15/16" Prelude Tegular	T4	
9/16" Suprafine Tegular	T5	
9/16" Interlude Node Tegular	T6	
mr16		
Fixed Downlight	DNF	
0-45° Adjustable Accent	AA	
Flush Mount	2FM	
Reflector Color		
Clear Specular	CS	
Clear Diffuse	CD	
Black Specular	BS	
Black Baffle	BB	
White Baffle	WB	
(Baffle available for downlight only)		
Lens Accessories		
Hex Louver	HL	
Linear Spread Lens	LSL	
Prismatic Spread Lens	PSL	
Sand Blasted Lens	SBL	
Clear Lens	CL	
UV Lens	UVL	
Factory Options		
Chicago Plenum	CP	
Emergency Battery Pack*	EM	
(4' Luminaires Only. Not available on 3 Cir.)		
HLR/GLR Fuse	FU	
Include 3000K Lamp*	L830	
Include 3500K Lamp*	L835	
Include 4100K Lamp*	L841	
Finish		WH
Matte White Housing & Trim Plate	WH	
Luminaire Length		
4' Nominal Housing	4'	
5' Nominal Housing	5'	



Avenue® 6

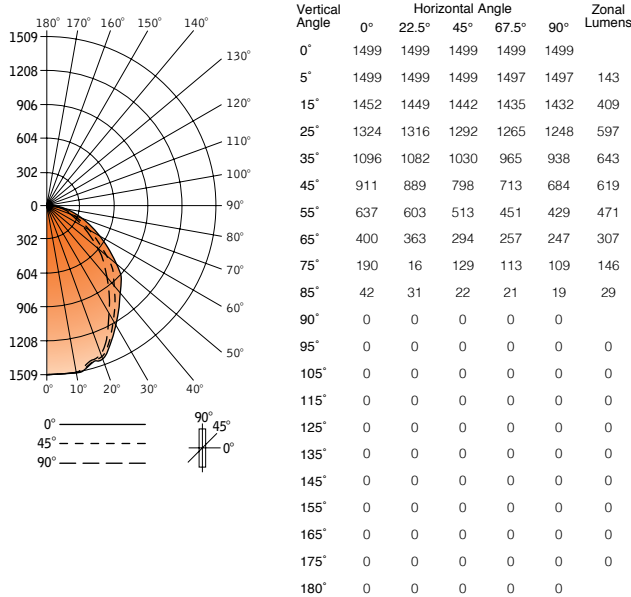
FLUORESCENT - REGRESS LENS

FAV6-SR-1T5HO-1C-120-S-G1-WH-4'

Filename: FAV6SR1T5H.IES
Test #: 13928.0

Lumens: 3364lm
Efficiency: 67%

CANDLEPOWER DISTRIBUTION



LUMEN SUMMARY

Zone	Lumens	% Lamp	% Fixture
0-30°	1149	23.0	34.2
0-40°	1792	35.8	53.3
0-60°	2882	57.6	84.7
0-90°	3364	67.3	100
Total Luminaire 0-180°	3364	67.3	100

LUMINANCE DATA (CD/M²)

Vertical Angle	0°	45°	90°
45°	8876	7775	6665
55°	7652	6162	5153
65°	6521	4793	4027
75°	5058	3434	2902
85°	3320	1739	1502

CO-EFFICIENTS OF UTILIZATION

Floor Ceiling Wall	80				70			20		50		30		10		00
	70	50	30	10	70	50	10	50	10	50	10	50	10	50	10	00
RCR 0	80	80	80	80	78	78	78	75	75	72	72	69	69	69	69	67
1	75	72	69	67	73	70	66	68	64	65	62	63	60	59	59	59
2	69	61	60	57	67	63	56	61	55	59	54	57	53	51	51	51
3	64	58	53	49	62	58	49	55	48	53	47	51	46	45	45	45
4	59	52	47	43	57	51	42	49	42	48	41	46	41	39	39	39
5	54	46	41	37	53	46	37	44	36	46	36	42	35	34	34	34
6	50	42	36	32	49	41	32	40	32	39	32	38	31	30	30	30
7	46	38	32	29	45	37	28	36	28	35	28	34	28	27	27	27
8	43	34	29	25	42	34	25	33	25	32	25	31	24	23	23	23
9	39	31	25	22	39	30	22	30	22	29	22	28	21	20	20	20
10	37	28	23	19	36	28	19	27	19	26	19	26	19	18	18	18

Numbers indicate percentage values of reflectivity.

Go to www.focalpointlights.com for additional photometric data.

Avenue® 6

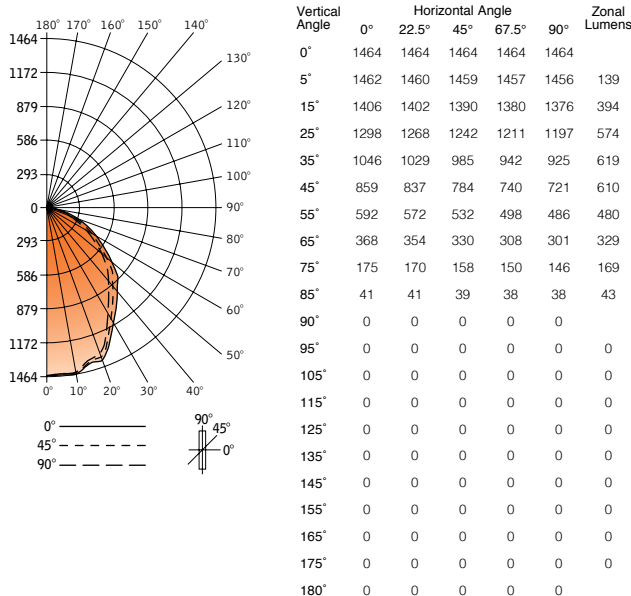
FLUORESCENT - FLUSH LENS

FAV6-FL-1T5HO-1C-120-G1-WH-4'

Filename: FAV6FL1T5H.IES
Test #: 13929.0

Lumens: 3358lm
Efficiency: 67%

CANDLEPOWER DISTRIBUTION



LUMEN SUMMARY

Zone	Lumens	% Lamp	% Fixture
0-30°	1107	22.1	330
0-40°	1726	34.5	51.4
0-60°	2817	56.3	83.9
0-90°	3358	67.2	100
Total Luminaire 0-180°	3358	67.2	100

LUMINANCE DATA (CD/M²)

Vertical Angle	0°	45°	90°
45°	8370	7639	7025
55°	7111	6390	5838
65°	5999	5380	4907
75°	4658	4206	3886
85°	3241	3083	3004

CO-EFFICIENTS OF UTILIZATION

Floor Ceiling Wall	80				70			20		50		30		10		00
	70	50	30	10	70	50	10	50	10	50	10	50	10	50	10	00
RCR 0	80	80	80	80	78	78	78	75	75	74	74	69	69	69	69	67
1	74	71	69	67	72	70	66	67	64	65	62	62	60	58	58	58
2	68	64	60	56	67	62	56	60	54	58	53	56	52	51	51	51
3	63	57	50	48	62	56	48	54	47	52	46	51	45	44	44	44
4	58	51	46	42	57	50	41	49	41	47	40	46	40	38	38	38
5	53	46	40	36	52	45	36	43	35	42	35	41	35	33	33	33
6	49	41	35	31	48	40	31	39	31	35	31	37	31	29	29	29
7	46	37	32	28	45	37	28	36	27	35	27	34	27	26	26	26
8	42	33	28	24	41	33	24	32	24	31	24	30	24	22	22	22
9	39	30	25	21	38	30	21	29	21	28	21	28	21	20	20	20
10	36	27	22	19	35	27	19	26	19	26	19	25	18	17	17	17

Numbers indicate percentage values of reflectivity.

Go to www.focalpointlights.com for additional photometric data.

Avenue® 6

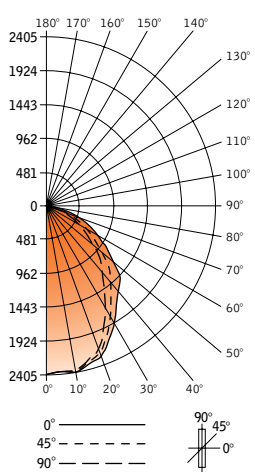
FLUORESCENT - REGRESS LENS

FAV6-SR-2T5HO-1C-120-S-G1-WH-4'

Filename: FAV6SR2T5H.IES
Test #: 13926.0

Lumens: 5281lm
Efficiency: 53%

CANDLEPOWER DISTRIBUTION



Vertical Angle	Horizontal Angle				Zonal Lumens
	0°	22.5°	45°	67.5°	
0°	2399	2399	2399	2399	2399
5°	2377	2379	2374	2373	2370
15°	2326	2319	2299	2280	2270
25°	2090	2070	2016	1951	1917
35°	1727	1692	1584	1472	1426
45°	1466	1411	1244	1111	1063
55°	1023	958	806	705	674
65°	645	579	466	405	390
75°	298	252	201	176	168
85°	66	48	36	33	31
90°	0	0	0	0	0
95°	0	0	0	0	0
105°	0	0	0	0	0
115°	0	0	0	0	0
125°	0	0	0	0	0
135°	0	0	0	0	0
145°	0	0	0	0	0
155°	0	0	0	0	0
165°	0	0	0	0	0
175°	0	0	0	0	0
180°	0	0	0	0	0

LUMEN SUMMARY

Zone	Lumens	% Lamp	% Fixture
0-30°	1809	18.1	34.2
0-40°	202	28.0	53.1
0-60°	4520	45.2	85.6
0-90°	5281	52.8	100
Total Luminaire 0-180°	5281	52.8	100

LUMINANCE DATA (CD/M²)

Vertical Angle	0°	45°	90°
45°	14284	12121	10357
55°	12288	9682	8096
65°	10515	7597	6358
75°	7922	5251	4472
85°	217	2846	2451

CO-EFFICIENTS OF UTILIZATION

Floor Ceiling Wall	80				70			20		30		10		00
	70	50	30	10	70	50	10	50	10	50	10	50	10	00
RCR 0	63	63	63	63	61	61	61	59	59	56	56	54	54	53
1	59	56	55	53	57	55	52	53	50	51	49	49	47	46
2	54	50	47	45	53	49	44	48	43	46	42	44	41	40
3	50	45	42	39	49	44	38	43	38	42	37	40	36	35
4	46	41	37	33	45	40	33	39	33	38	32	36	32	31
5	42	36	32	29	41	36	29	35	28	34	28	33	28	27
6	39	33	29	25	38	32	25	31	25	31	25	30	25	24
7	36	30	25	22	35	29	22	28	22	28	22	27	22	21
8	34	28	23	20	33	26	20	26	19	25	19	24	19	18
9	31	24	20	19	30	24	17	23	17	23	17	22	17	16
10	29	22	18	15	28	22	15	21	15	21	15	20	15	14

Numbers indicate percentage values of reflectivity.

Go to www.focalpointlights.com for additional photometric data.

Avenue® 6

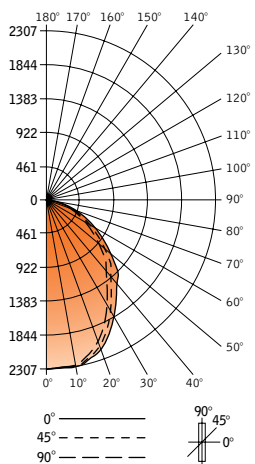
FLUORESCENT - FLUSH LENS

FAV6-FL-2T5HO-1C-120-G1-WH-4'

Filename: FAV6FL2T5H.IES
Test #: 13927.0

Lumens: 5255lm
Efficiency: 53%

CANDLEPOWER DISTRIBUTION



Vertical Angle	Horizontal Angle				Zonal Lumens
	0°	22.5°	45°	67.5°	
0°	2307	2307	2307	2307	2307
5°	2291	2290	2287	2284	2281
15°	2245	2235	2213	2190	2179
25°	1999	1977	1919	1865	1841
35°	1641	1606	1523	1447	1416
45°	1367	1322	1223	1145	1117
55°	949	911	834	780	759
65°	591	565	515	484	473
75°	274	265	245	230	226
85°	65	63	61	61	61
90°	0	0	0	0	0
95°	0	0	0	0	0
105°	0	0	0	0	0
115°	0	0	0	0	0
125°	0	0	0	0	0
135°	0	0	0	0	0
145°	0	0	0	0	0
155°	0	0	0	0	0
165°	0	0	0	0	0
175°	0	0	0	0	0
180°	0	0	0	0	0

LUMEN SUMMARY

Zone	Lumens	% Lamp	% Fixture
0-30°	1734	17.3	33.0
0-40°	2693	26.9	51.2
0-60°	4406	44.1	83.8
0-90°	5255	52.6	100
Total Luminaire 0-180°	5255	52.6	100

LUMINANCE DATA (CD/M²)

Vertical Angle	0°	45°	90°
45°	13319	11916	10883
55°	11399	10018	9117
65°	9635	8395	7711
75°	7294	6522	6016
85°	5138	4822	4822

CO-EFFICIENTS OF UTILIZATION

Floor Ceiling Wall	80				70			20		30		10		00
	70	50	30	10	70	50	10	50	10	50	10	50	10	00
RCR 0	63	63	63	63	61	61	61	59	59	56	56	54	54	53
1	58	56	54	52	57	55	51	53	50	50	48	49	47	46
2	54	50	47	44	52	49	43	47	42	45	42	44	41	40
3	49	45	41	38	48	44	37	42	37	41	36	40	36	34
4	46	40	35	33	44	39	32	38	32	37	32	36	31	30
5	42	36	31	28	41	35	28	34	28	33	27	32	27	26
6	39	32	28	25	38	32	25	31	24	30	24	29	24	23
7	36	9	25	22	35	29	22	28	21	27	21	26	21	20
8	33	26	22	19	32	26	19	25	19	24	19	24	19	18
9	30	24	19	17	30	23	16	3	16	22	16	22	16	15
10	28	21	17	15	28	21	15	21	15	20	15	20	14	14

Numbers indicate percentage values of reflectivity.

Go to www.focalpointlights.com for additional photometric data.