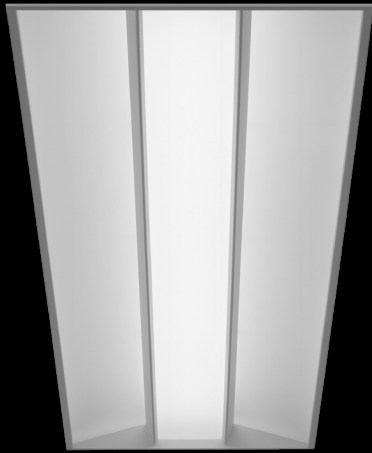
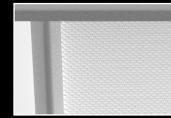


Equation™ 2 1x4

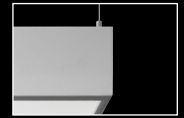
LED



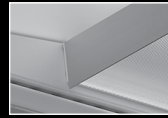
opal acrylic lens



MicroGlow™ lens

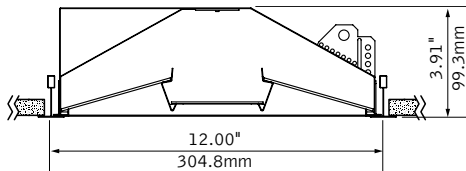


suspended or surface mount

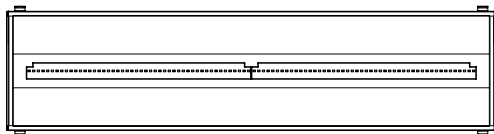


air return

DIMENSIONAL DATA



Overall height for luminaire with air return is 4.62"–4.89"



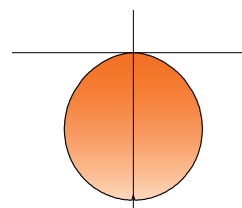
FEATURES

Equation™ 2 blends sleek aesthetics with uniform diffuse illumination.

Center diffuser features MicroGlow™ prismatic lens for brightness control and visual comfort. Opal acrylic center lens may also be specified.

Premium LEDs operate efficiently on a robust module platform to achieve excellent thermal management and reliable operation.

PERFORMANCE



Opal Acrylic Lens
Delivered Lumens: 3500lm
Total System Watts: 37W

PRODUCT OVERVIEW

Lumen Output: 2000-5000lm
 Wattage: 21-57W
 LPW: 86-100
 SDCM: 3
 Reported Lumen L80 @
 Maintenance: 60,000hrs

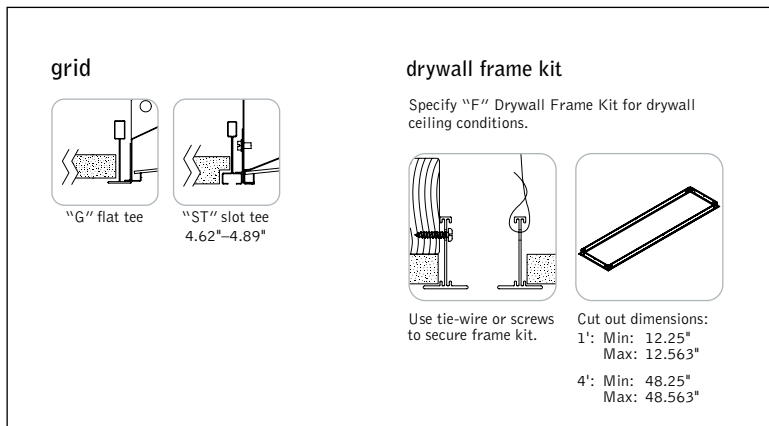


Photometric performance is measured in accordance with IESNA LM-79. Visit focalpointlights.com for complete photometric data. Visit designlights.org/QPL for model specifics.

fixture:

project:

MOUNTING INFORMATION



SPECIFICATIONS

LED System

Proprietary linear LED module incorporates premium LEDs on a robust platform to achieve excellent thermal management. LEDs are placed to promote a uniform appearance. Available in 3000K, 3500K or 4000K with CRI>80, 3 SDCM. Contact factory for additional color temperature and CRI options. 0-10V dimming driver standard. LED modules and drivers are replaceable from below.

Construction

One-piece 24 Ga. steel reflector and housing. 24 Ga. steel ends. Bottom access 24 Ga. steel driver compartment. Positional brackets supplied as standard. Standard weight: 19.4 lbs. Surface-mount/suspended weight: 24.2 lbs.

Optic

24 Ga. steel reflectors finished in matte satin white powder coat. .080" thick frosted white acrylic diffusers. Center shielding options include .080" thick opal acrylic lens or MicroGlow™ prismatic lens with optical filter overlay.

Electrical

Standard 120-277V driver includes 0-10V analog dimming. Power factor > .9. Optional DALI, Lutron Ecosystem or Step-dimming drivers available.

Emergency Battery

Bodine BSL310-CAN. Emergency output—10 watts for 90 minutes.

Labels

UL and cUL listed. Suitable for Dry or Damp Locations, indoor use only.

Finish

Polyester powder coat applied over a multi-stage pre-treatment.

Lumen Maintenance

Reported: L80 at 60,000 hours
(Derived from EPA TM-21 calculator per 10,000 hours of LED test data)

Warranty

LED system rated for operation in ambient environments up to 25°C. 5-year limited warranty.

PERFORMANCE CHART

Delivered Lumens	Tested System Watts	LPW
2000	21	98
2500	26	100
3000	31	98
3500	37	96
4000	43	93
4500	49	90
5000	57	86

3500K data. *Lumen output may vary +/- 5%. Actual wattage may vary +/- 5%. Multipliers: 2700K - 0.949, 3000K - 0.966, 4000K - 1.025.

ORDERING

Luminaire Series	Equation 2	FEQ2
Nominal Size	1' x 4'	14
Shielding		
Opal Acrylic Lens	AC	
MicroGlow™ Prismatic Lens	MG	
Lumen Output		
2000 Lumens	2000L	
2500 Lumens	2500L	
3000 Lumens	3000L	
3500 Lumens	3500L	
4000 Lumens	4000L	
4500 Lumens	4500L	
5000 Lumens	5000L	
Color Temperature		
3000K	30K	
3500K	35K	
4000K	40K	
Circuit		1C
Single Circuit	1C	
Voltage		
UNV 120/277 Volt	UNV	
347 Volt	347	
<small>(Not available with SD5. Transformer required for all drivers except LD1.)</small>		
Driver		
0-10V - 10% Dimming	LD1	
0-10V - 1% Dimming	L11	
Lutron A-Series -	L3D	
1% EcoSystem Digital		
<small>(4000 Lumens or less only. Consult factory for 3-wire control)</small>		
Lutron H-Series - 1% Dimming	LH1	
Lutron 5-Series -	LU5	
5% EcoSystem Digital		
DALI - 1% Dimming	D11	
<small>(3000 Lumens or less only.)</small>		
Step Dimming	SD5	
<small>(120/277 only.)</small>		
Mounting		
24" Aircraft Cable	C24	
48" Aircraft Cable	C48	
96" Aircraft Cable	C96	
Drywall Frame Kit	F	
<small>(Cut out dimensions: Min: 12.25"/Max: 12.563" Min: 48.25"/Max: 48.563")</small>		
Grid	G	
Slot Tee	ST	
Surface Mount	SM	
Factory Options		
Air Return	AR	
<small>(Overall height with Air Return is 4.62"-4.89")</small>		
Chicago Plenum	CP	
Emergency Battery Pack with		
Integral Test Switch	EM	
6' New York City Flex Whip (120V)	FNY1	
6' New York City Flex Whip (277V)	FNY2	
6' Flex Whip	FW	
<small>(Sensor options available - consult factory)</small>		
Finish		WH
Matte Satin White	WH	



Equation™ 2 1x4

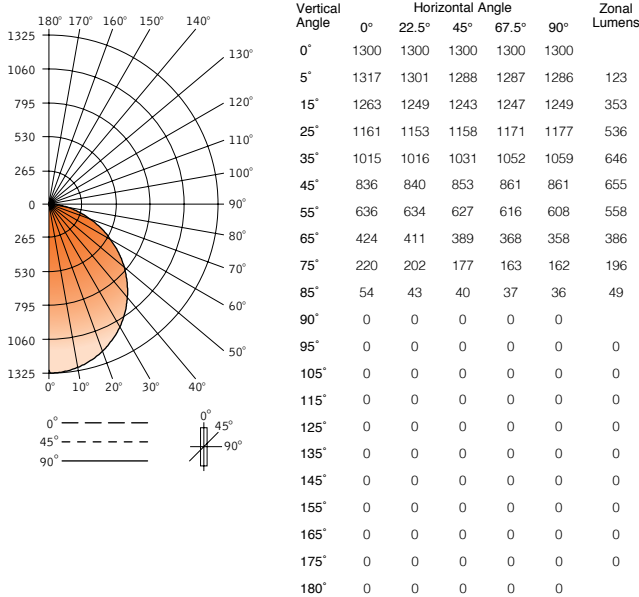
LED

FEQ2-14-AC-3500L-35K-1C-UNV-LD1

Filename: FEQ214AC3500L35K.IES
 Test #: 1246032 extrapolated

Lumens: 3501lm
 System Watts: 37W
 LPW: 95

CANDLEPOWER DISTRIBUTION



LUMEN SUMMARY

Zone	Lumens	% Fixture
0-30°	1011	28.9
0-40°	1657	47.3
0-60°	2870	82.0
0-90°	3501	100.0
Total Luminaire 0-180°	3501	100.0

LUMINANCE DATA (CD/M²)

Vertical Angle	0°	45°	90°
45°	3642	3715	3750
55°	3414	3370	3268
65°	3094	2837	2608
75°	2617	2106	1923
85°	1906	1405	1270

CO-EFFICIENTS OF UTILIZATION

Floor Ceiling Wall	80				70			20 50		30		10		00
	70	50	30	10	70	50	10	50	10	50	10	50	10	00
RCR 0	119	119	119	119	116	116	116	111	111	106	106	102	102	100
1	109	105	101	97	107	102	95	98	92	94	90	91	87	85
2	100	92	85	80	97	90	79	86	77	83	75	80	73	71
3	91	81	73	67	89	79	66	76	65	74	64	71	63	60
4	84	72	63	57	81	70	56	68	55	66	55	64	54	52
5	77	64	55	49	75	63	49	61	48	59	48	57	47	45
6	71	58	49	43	69	57	43	55	42	54	42	52	41	39
7	66	53	44	38	64	52	38	50	37	49	37	47	37	35
8	61	48	40	34	60	47	34	46	33	45	33	44	33	31
9	57	44	36	30	56	43	30	42	30	41	30	40	30	28
10	54	41	33	28	52	40	28	39	27	38	27	37	27	25

Numbers indicate percentage values of reflectivity.

Go to www.focalpointlights.com for additional photometric data.

Equation™ 2 1x4

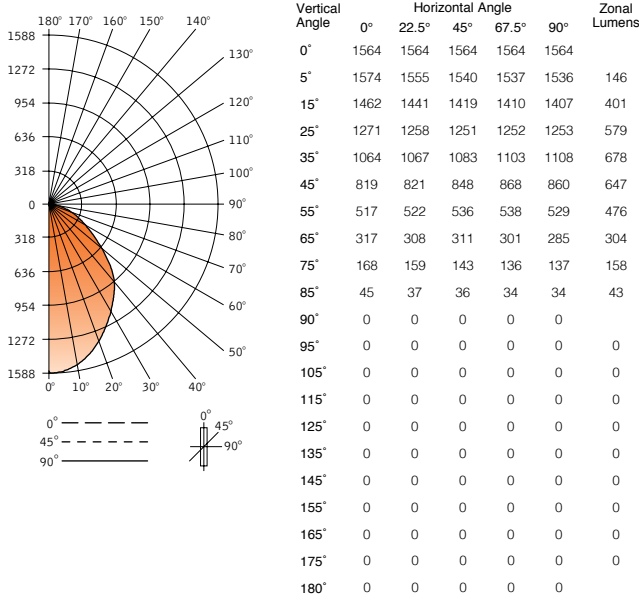
LED

FEQ2-14-MG-3500L-35K-1C-UNV-LD1

Filename: FEQ214MG3500L35K.IES
 Test #: 1237065 extrapolated

Lumens: 3432lm
 System Watts: 37W
 LPW: 93

CANDLEPOWER DISTRIBUTION



LUMEN SUMMARY

Zone	Lumens	% Fixture
0-30°	1126	32.8
0-40°	1804	52.6
0-60°	2928	85.3
0-90°	3432	100.0
Total Luminaire 0-180°	3432	100.0

LUMINANCE DATA (CD/M²)

Vertical Angle	0°	45°	90°
45°	3673	3806	3857
55°	2860	2963	2924
65°	2381	2335	2141
75°	2055	1753	1682
85°	1624	1313	1233

CO-EFFICIENTS OF UTILIZATION

Floor Ceiling Wall	80				70			20 50		30		10		00
	70	50	30	10	70	50	10	50	10	50	10	50	10	00
RCR 0	119	119	119	119	116	116	116	111	111	106	106	102	102	100
1	110	106	102	98	107	103	97	99	94	95	91	92	88	86
2	101	93	87	82	98	91	81	88	79	85	77	82	76	74
3	93	83	75	69	90	81	69	78	68	76	66	73	65	63
4	85	74	66	60	83	73	59	70	59	68	58	66	57	55
5	79	67	58	52	77	66	52	64	51	62	51	60	50	48
6	73	61	52	46	71	60	46	58	45	56	45	55	45	43
7	68	55	47	41	66	54	41	53	41	51	40	50	40	38
8	63	51	42	37	62	50	37	49	37	47	36	46	36	34
9	59	47	39	33	58	46	33	45	33	44	33	43	33	31
10	56	43	35	30	55	43	30	42	30	41	30	40	30	28

Numbers indicate percentage values of reflectivity.

Go to www.focalpointlights.com for additional photometric data.