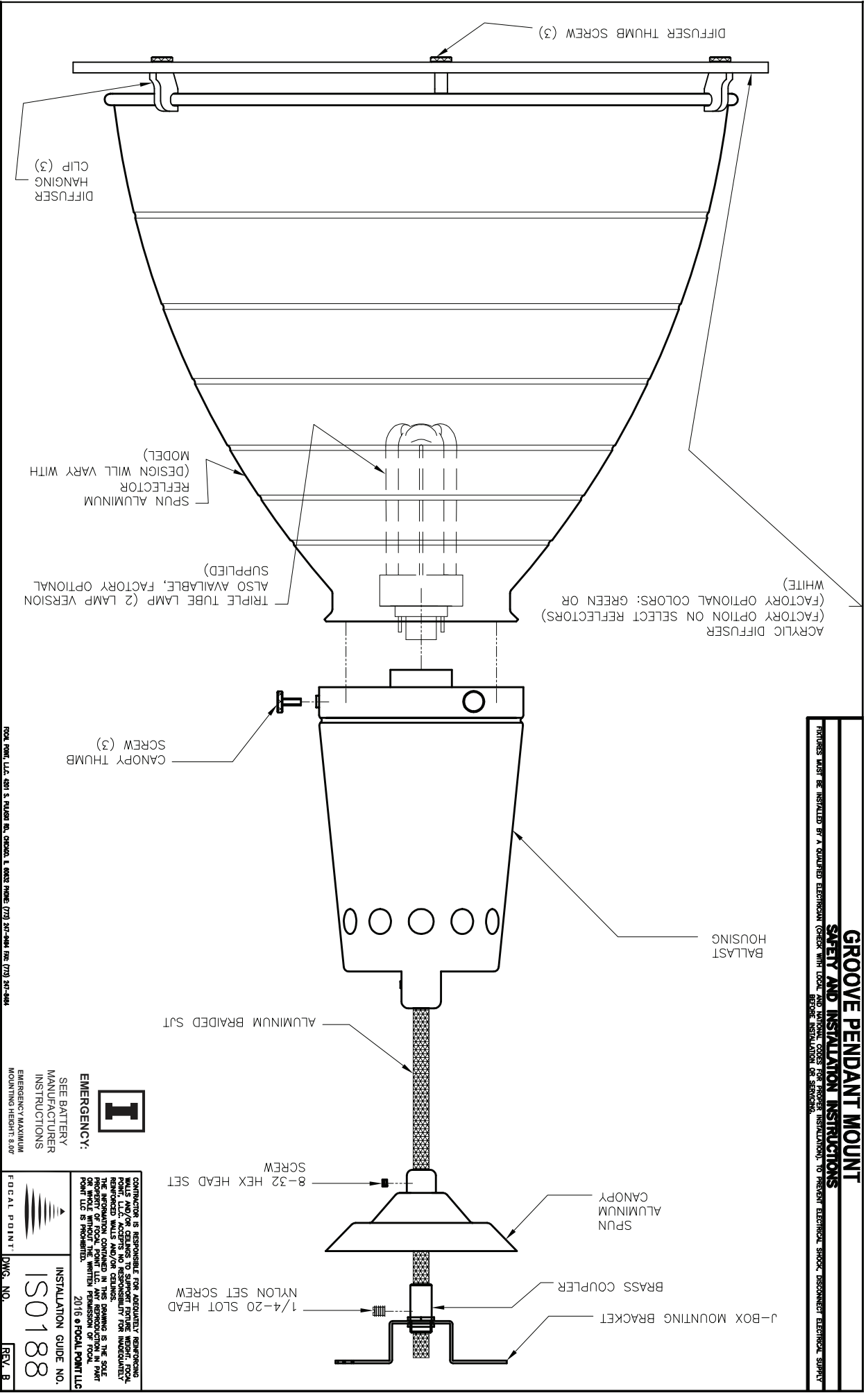


**GROOVE PENDANT MOUNT**  
**SAFETY AND INSTALLATION INSTRUCTIONS**  
FACTORY MUST BE INSTALLED BY A QUALIFIED TECHNICIAN (CHECK WITH LOCAL ELECTRICAL INSULATION) TO PREVENT ELECTRICAL SHOCK. DISCONNECT ELECTRICAL SUPPLY BEFORE INSTALLATION OF SENSORS.



FOCAL POINT, LLC, 401 S. PULASKI BL., CHICAGO, IL 60607 PHONE: (773) 327-4484 FAX: (773) 327-4484

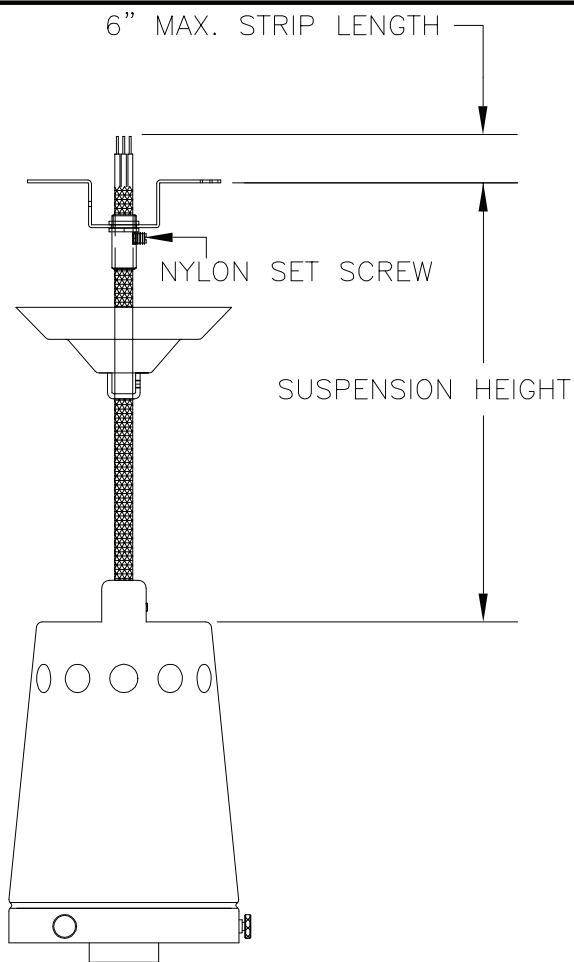
**I**

**EMERGENCY:**  
 SEE BATTERY MANUFACTURER'S INSTRUCTIONS FOR EMERGENCY MAXIMUM MOUNTING HEIGHTS.

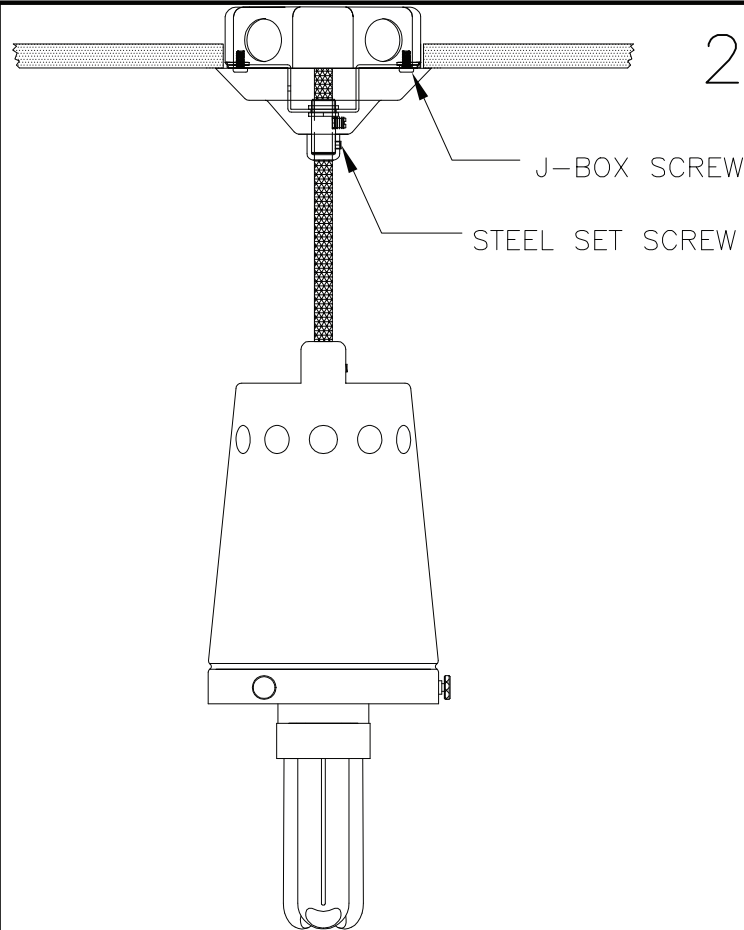
CONTRACTOR IS RESPONSIBLE FOR ADEQUATE REINFORCING WALLS AND/OR CEILING TO SUPPORT FIXTURE WEIGHT. ROCK, REINFORCED WALLS AND/OR CEILING. THE INFORMATION CONTAINED IN THIS DRAWING IS THE SOLE PROPERTY OF FOCAL POINT, LLC. ANY REPRODUCTION OF THIS DRAWING WITHOUT THE WRITTEN PERMISSION OF FOCAL POINT, LLC IS PROHIBITED. © 2016 FOCAL POINT, LLC

INSTALLATION GUIDE NO. **ISO188**

FOCAL POINT, LLC  
 DWG. NO. **REV. B**



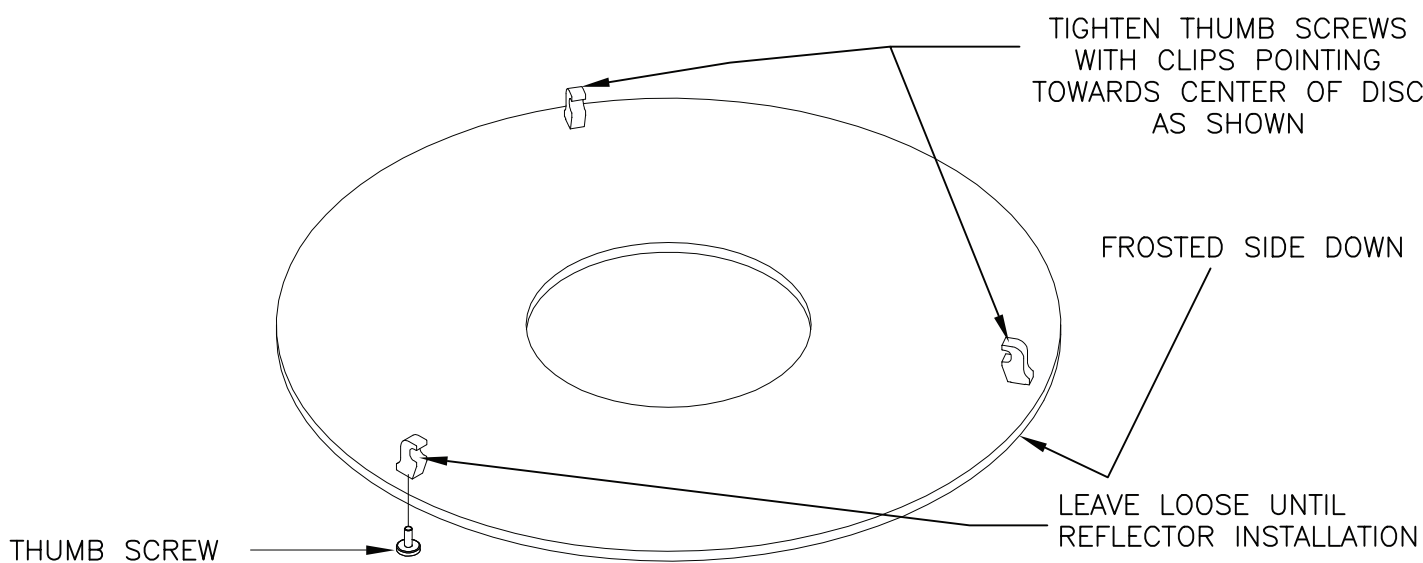
1



2

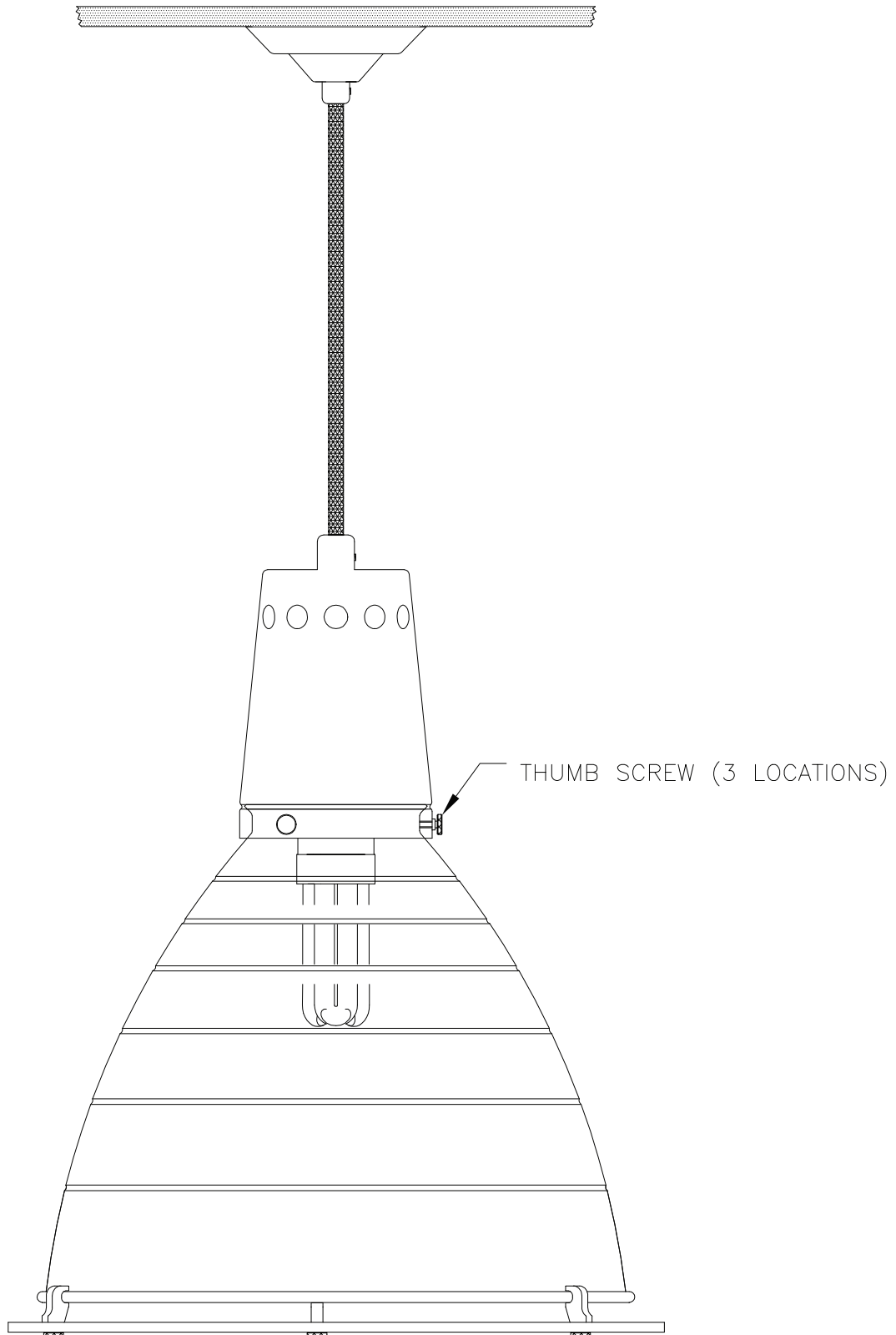
DETERMINE DESIRED SUSPENSION LENGTH. CUT CORD WITH 6" EXCESS (EX. 3' DESIRED SUSPENSION=3'-6" CORD LENGTH). ADJUST J-BOX BRACKET ALONG CORD UNTIL TOP OF BRACKET IS AT DESIRED CEILING SUSPENSION POINT. TIGHTEN BRACKET ONTO CORD WITH NYLON SET SCREW. STRIP CORD ABOVE J-BOX BRACKET WITH IDEAL #45-128 OR EQUAL COAX STRIPPER.

ATTACH J-BOX BRACKET TO J-BOX WITH J-BOX SCREWS (BY OTHERS). MAKE POWER CONNECTIONS. SLIDE CANOPY UP UNTIL FLUSH WITH CEILING, TIGHTEN CANOPY SET SCREW AGAINST BRASS COUPLER (DO NOT OVER TIGHTEN SET SCREW). 1 LAMP FIXTURES: AFTER HOUSING IS SECURE, INSTALL LAMP. 2 LAMP FIXTURES: INSTALL LAMPS AFTER STEP 4 IS COMPLETE. TO INSTALL LAMP: INSERT LAMP INTO SOCKET AND TWIST CLOCKWISE TO LOCK.



3

INSTALLATION OF OPTIONAL ACRYLIC DIFFUSER TO BE COMPLETED BEFORE INSTALLATION OF REFLECTOR ONTO HOUSING. INSERT THUMB SCREWS THROUGH HOLES ON FROSTED SIDE OF DIFFUSER AND SCREW INTO CLIPS. ADJUST CLIPS AS SHOWN BY TIGHTENING 2 OF 3 THUMB SCREWS WITH CLIPS POINTING TOWARD THE CENTER OF THE DISC. SLIDE CURLED EDGE OF REFLECTOR INTO 2 TIGHTENED CLIPS. TURN AND TIGHTEN 3rd CLIP DOWN.



LOOSEN THUMB SCREWS ON HOUSING (3). SLIDE REFLECTOR UP INTO HOUSING SO REFLECTOR NECK MOUNTS FLUSH TO RIDGE IN HOUSING. HAND TIGHTEN THUMB SCREWS FIRMLY AGAINST VERTICAL NECK OF REFLECTOR.