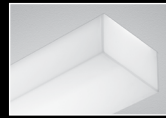


Seem® 4

LED WITH POP-DOWN LENS



FOCAL POINT®



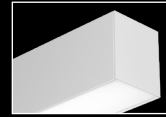
recessed pop-down lens companion



recessed flush lens companion



wall to ceiling companion

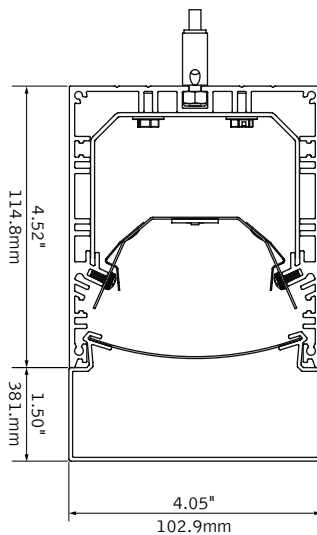


wall mount companion



perimeter companion

DIMENSIONAL DATA



FEATURES

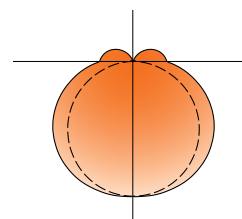
4' linear direct LED with 1.5" pop-down lens.

Dimensional frosted acrylic lens provides uninterrupted illumination, without pixels or shadows.

LED position and lens material optimized to provide the perfect blend of high performance and visual comfort.

Choice of output levels to meet a wide variety of application needs.

PERFORMANCE



PRODUCT OVERVIEW

Lumen Output: 1000-4000lm

Wattage: 13-51W

LPW: 74-80

SDCM: 3

4' Pop-Down Lens
Nominal output:
875 Lumens per foot

Delivered Lumens: 3500lm

Total System Watts: 43W

Photometric performance is measured in accordance with IESNA LM-79. Visit focalpointlights.com for complete photometric data. Visit designlights.org/QPL for model specifics.

fixture:

project:

SPECIFICATIONS

LED System

Proprietary linear LED module incorporates premium LEDs on a robust platform to achieve excellent thermal management. LEDs are placed to promote a uniform appearance. Available in 3000K, 3500K or 4000K with CRI>80, 3SDCM. LED modules and drivers are replaceable from below.

Construction

One piece extruded aluminum housing. Die cast aluminum end caps. 2' unit weight: 18 lbs., 3' unit weight: 24 lbs., 4' unit weight: 30 lbs., 5' unit weight: 36 lbs.

Optic

Reflectors fabricated of 22 Ga. steel finished in High Reflectance White powder coat. Extruded acrylic lens .06" thick with frosted finish, up to 8' continuous.

Electrical

Luminaires are pre-wired with factory installed branch circuit wiring and over-molded quick connects. Standard 120-277V constant current driver includes 0-10V analog dimming. Dimming range 100% to 10%. Power factor > .9.

Emergency Battery

Bodine BSL310-CAN. Emergency output - 10 watts for 90 minutes.

Labels

UL and cUL listed. Suitable for Dry or Damp Locations, indoor use only.

Finish

Polyester powder coat applied over a multi-stage pre-treatment.

Lumen Maintenance

Calculated: L70 at 285,000 hours Reported: L70 at >61,000 hours
 L90 at 75,000 hours L90 at >61,000 hours

Derived from EPA TM-21 calculator.

Reliability

At Focal Point, our products are designed to stand the test of time. Each luminaire is engineered using superior components, manufactured with the utmost care and rigorously tested. Contact us for reliability data.

Warranty

LED system rated for operation in ambient environments up to 25°C. 5 year limited warranty.

4' PERFORMANCE CHART

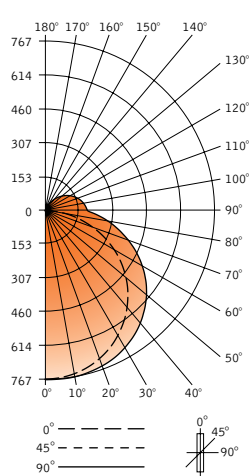
Shielding	Lumens per Foot	Delivered Lumens	Tested System Watts	LWP
1.5" Pop-Down Lens	275LF	1000	13	80
	375LF	1500	17	84
	625LF	2500	29	82
	875LF	3500	43	77
	1000LF	4000	51	74

*Based on 3500k, 4' lengths. *Lumen output may vary +/- 7%. Actual wattage may vary +/- 5%

ORDERING

Luminaire Series		FSM4LS
Seem 4 LED	FSM4LS	
Shielding		PD
1.5" Pop-Down Lens	PD	
Lumen Output		
275 Lumens per foot <small>(Not available with Lutron Drivers.)</small>	275LF	
375 Lumens per foot <small>(Not available with LU5 & LH1 Drivers)</small>	375LF	
625 Lumens per foot <small>(3' minimum with LU5 & LH1 Drivers)</small>	625LF	
875 Lumens per foot	875LF	
1000 Lumens per foot <small>(Not available with L3D driver)</small>	1000LF	
Color Temperature		
3000K	30K	
3500K	35K	
4000K	40K	
Circuit		1C
Single Circuit	1C	
Voltage		
120 Volt	120	
277 Volt	277	
UNV Volt	UNV	
<small>(Cannot be specified with EM option)</small>		
Driver		
<small>(See driver reference for driver quantities)</small>		
0-10V - 10% Dimming	LD1	
0-10V - 1% Dimming	L11	
Lutron A-Series	L3D	
1% EcoSystem Digital <small>(Consult factory for 3-wire control)</small>		
Lutron H-Series 1% Dimming	LH1	
Lutron 5-Series	LU5	
5% EcoSystem Digital		
DALI 1% Dimming	D11	
Mounting		
24" Cable Suspension	C24	
48" Cable Suspension	C48	
96" Cable Suspension	C96	
<small>(Add "P" for Chicago plenum. Eg: CP12) (Specify one of the following in place of "C" J - for 2' canopies at non-feed locations. CS - for sloped ceiling applications.)</small>		
Surface Mount	SM	
Factory Options		
Emergency Circuit*	EC	
Emergency Battery Pack* <small>(4' lengths or longer)</small>	EM	
Finish		
Titanium Silver	TS	
Matte White Housing	WH	
Luminaire Length <small>(Lengths are nominal)</small>		
	2'	
	3'	
	4'	
	5'	
	6'	
	7'	
	8'	
<small>(Smaller increments available. Consult factory for details.)</small>		

CANDLEPOWER DISTRIBUTION



Vertical Angle	Horizontal Angle				
	0°	22.5°	45°	67.5°	90°
0°	765	765	765	765	765
5°	760	763	763	764	767
15°	733	740	746	751	756
25°	681	693	709	722	730
35°	606	624	654	673	683
45°	514	541	582	604	616
55°	407	444	490	520	534
65°	289	336	387	423	437
75°	168	222	279	319	333
85°	63	120	179	219	231
90°	17	76	134	174	186
95°	16	70	128	167	179
105°	14	60	115	153	166
115°	11	47	98	134	147
125°	8	32	78	109	122
135°	6	16	54	81	92
145°	3	3	27	51	59
155°	1	1	6	20	27
165°	0	0	0	0	0
175°	0	0	0	0	0
180°	0	0	0	0	0

LUMEN SUMMARY

Zone	Lumens	% Fixture
0-40°	1016	32.0
0-60°	1888	59.4
0-90°	2726	85.8
Total Luminaire 0-180°	3177	100.0

LUMINANCE DATA (CD/M²)

Vertical Angle	Horizontal		
	0°	45°	90°
45°	5802	5273	5224
55°	5595	4991	4994
65°	5277	4664	4724
75°	4782	4285	4417
85°	4355	3942	4140

Go to www.focalpointlights.com for additional photometric data.