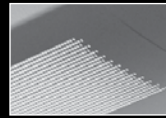
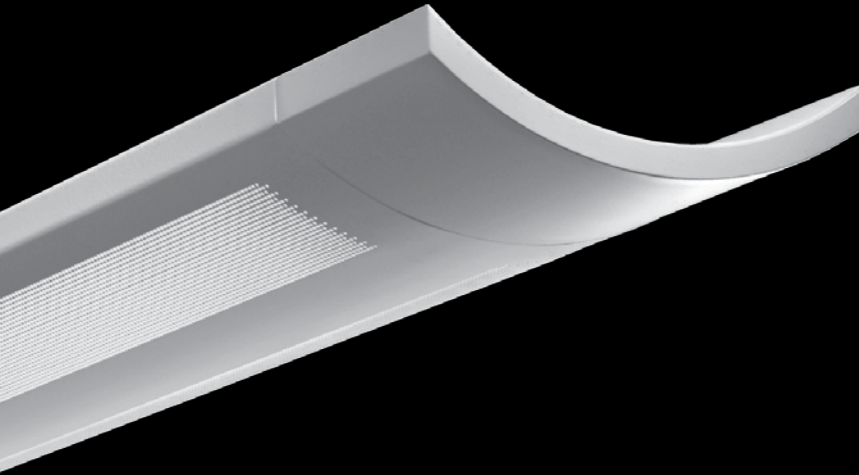
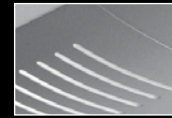


Verve™ II XP

FLUORESCENT HIGH PERFORMANCE



perforated

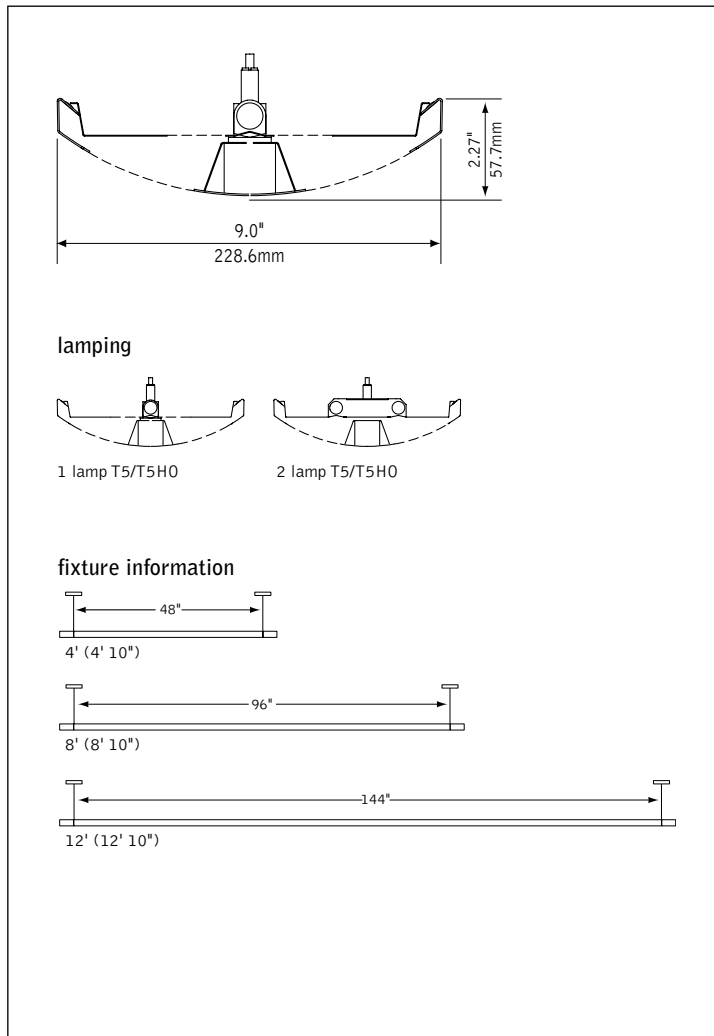


slotted



solid

DIMENSIONAL DATA



FEATURES

Suspended linear indirect fluorescent with contoured housing and end caps.

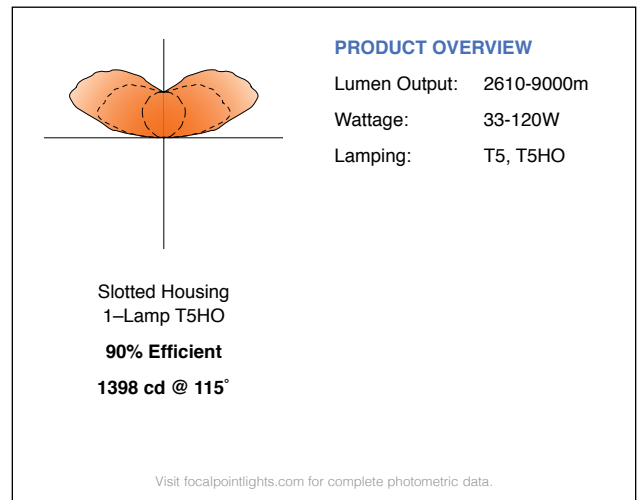
High performance optic for close to ceiling mounting.

One-piece steel housing with 5" die-cast end caps.

Housing available up to 12' lengths with two-point suspension.

Verve™ is an excellent choice for any open office application.

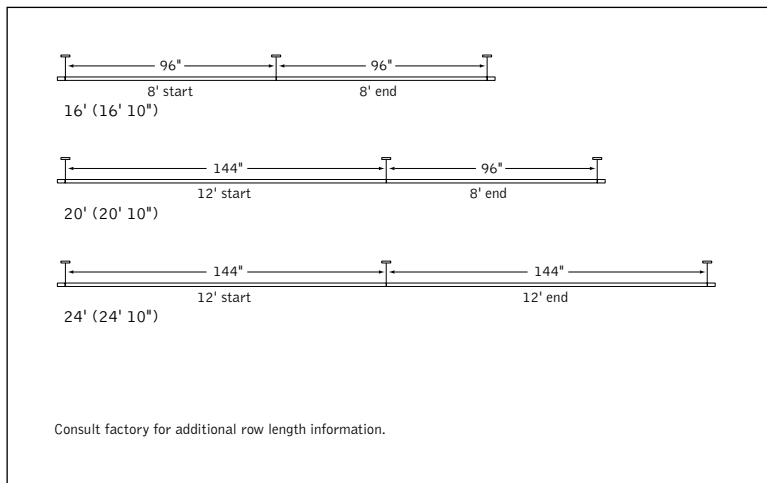
PERFORMANCE



fixture:

project:

SUSPENSION INFORMATION



SPECIFICATIONS

Construction

One-piece 20 Ga. steel housing available solid or with perforated or slotted pattern. Perforated or slotted housing includes white acrylic insert. Die-cast 5" end cap standard. Optional short 1" end cap also available. For row installation, internal brackets form hairline joint. Standard lengths are available in 4', 8' and 12'. All luminaires are provided with single point aircraft cable suspension mounted on 48", 96" or 144" centers. 4' unit weight: 20 lbs., 8' unit weight: 30 lbs., 12' unit weight: 46 lbs.

Optic

Die-formed .020 semi-specular aluminum and 20 Ga. steel.

Electrical

Luminaires are pre-wired with factory installed branch circuit wiring and over-molded quick connects. Factory installed SJT power cord at feed location is included. Electronic ballasts are thermally protected and have a Class "P" rating. Optional dimming ballasts available.

Labels

UL and cUL listed.

Finish

Polyester powder coat applied over a 5-stage pretreatment. Canopy finished in Matte Satin White.

ORDERING

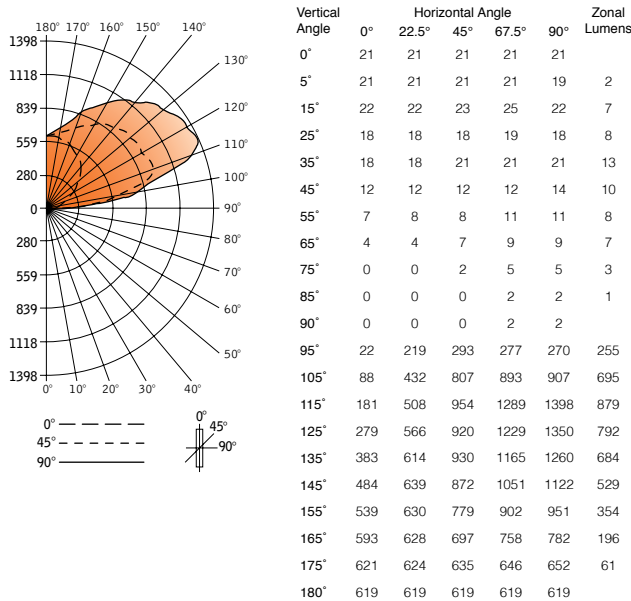
| Fixture Series | | FV2SXP |
|---|--------|---------------|
| Verve II | FV2SXP | _____ |
| Shielding | | _____ |
| Perforated Housing | PS | _____ |
| Slotted Housing | SL | _____ |
| Solid Housing | SD | _____ |
| Lamping | | _____ |
| 1 Lamp T5 | 1T5 | _____ |
| 2 Lamp T5 | 2T5 | _____ |
| 1 Lamp T5HO | 1T5HO | _____ |
| 2 Lamp T5HO | 2T5HO | _____ |
| Circuit | | _____ |
| Single Circuit | 1C | _____ |
| Dual Circuit | 2C | _____ |
| <small>(Multiple lamp luminaires only)</small> | | |
| Voltage | | _____ |
| 120 Volt | 120 | _____ |
| 277 Volt | 277 | _____ |
| 347 Volt | 347 | _____ |
| <small>(Consult factory for dimming options)</small> | | |
| 120/277 UNV | UNV | _____ |
| <small>(Not available with 1-lamp T5HO dimming or EM)</small> | | |
| Ballast | | _____ |
| Electronic Program Start <10% THD | S | _____ |
| 0-10V | D7 | _____ |
| Lutron 1% 3-wire | DH | _____ |
| Lutron 1% H-Series | DK | _____ |
| Mounting | | _____ |
| 24" Cable Suspension | C24 | _____ |
| 48" Cable Suspension | C48 | _____ |
| 96" Cable Suspension | C96 | _____ |
| <small>(Add "P" for Chicago plenum. Eg: CP12) (Specify one of the following in place of "C" J - for 2" canopies at non-feed locations. CS - for sloped ceilings.)</small> | | |
| Factory Options | | _____ |
| Dust Cover | DC | _____ |
| Emergency Circuit* | EC | _____ |
| Emergency Battery Pack* | EM | _____ |
| HLR/GLR Fuse | FU | _____ |
| Short 1" end cap | SE | _____ |
| Include 3000K Lamp* | L830 | _____ |
| Include 3500K Lamp* | L835 | _____ |
| Include 4100K Lamp* | L841 | _____ |
| <small>(Sensor options available - consult factory)</small> | | |
| Finish | | _____ |
| Matte White Housing | WH | _____ |
| Titanium Silver | TS | _____ |
| Luminaire Length | | _____ |
| 4' | 4' | _____ |
| 8' | 8' | _____ |
| 12' | 12' | _____ |
| 16' (8'+8') | 16' | _____ |
| 20' (12'+8') | 20' | _____ |
| 24' (12'+12') | 24' | _____ |

FV2SXP-SL-1T5HO-1C-120-S-C48-WH-4'

Filename: FV2SXP-SL-1T5HO-1C-120-S-C48-WH-4'.IES
 Test #: 16649.0

Lumens: 4500lm
 Efficiency: 90%

CANDLEPOWER DISTRIBUTION



LUMEN SUMMARY

| Zone | Lumens | % Lamp | % Fixture |
|------------------------|-------------|-------------|------------|
| 90°-120° | 1829 | 36.6 | 40.6 |
| 90°-130° | 2621 | 52.4 | 58.2 |
| 90°-150° | 3833 | 76.7 | 85.2 |
| 90°-180° | 4443 | 88.9 | 98.7 |
| Total Luminaire | 4500 | 90.0 | 100 |

LUMINANCE DATA (cd/M²)

| Vertical Angle | 0° | 45° | 90° |
|----------------|----|-----|-----|
| 45° | 78 | 69 | 81 |
| 55° | 56 | 54 | 74 |
| 65° | 44 | 59 | 76 |
| 75° | 0 | 24 | 59 |
| 85° | 0 | 0 | 42 |

CO-EFFICIENTS OF UTILIZATION

| Floor Ceiling Wall | 80 | | | | 70 | | | 20 50 | | 30 | | 10 | | 00 |
|--------------------|----|----|----|----|----|----|----|-------|----|----|----|----|----|----|
| | 70 | 50 | 30 | 10 | 70 | 50 | 10 | 50 | 10 | 50 | 10 | 50 | 10 | 00 |
| RCR 0 | 86 | 86 | 86 | 86 | 74 | 74 | 74 | 51 | 51 | 30 | 30 | 10 | 10 | 1 |
| 1 | 78 | 74 | 71 | 68 | 67 | 64 | 59 | 44 | 41 | 26 | 24 | 9 | 9 | 1 |
| 2 | 71 | 65 | 60 | 55 | 61 | 56 | 48 | 38 | 34 | 23 | 20 | 8 | 7 | 1 |
| 3 | 65 | 57 | 51 | 46 | 55 | 49 | 40 | 34 | 28 | 20 | 17 | 7 | 6 | 1 |
| 4 | 59 | 50 | 44 | 39 | 50 | 43 | 34 | 30 | 24 | 18 | 14 | 6 | 5 | 1 |
| 5 | 54 | 45 | 38 | 33 | 46 | 38 | 29 | 27 | 20 | 16 | 12 | 6 | 4 | 1 |
| 6 | 50 | 40 | 33 | 28 | 42 | 34 | 25 | 24 | 18 | 14 | 11 | 5 | 4 | 0 |
| 7 | 46 | 36 | 29 | 25 | 39 | 31 | 22 | 22 | 16 | 13 | 9 | 4 | 3 | 0 |
| 8 | 43 | 32 | 26 | 22 | 36 | 28 | 19 | 20 | 14 | 12 | 8 | 4 | 3 | 0 |
| 9 | 40 | 30 | 24 | 19 | 34 | 26 | 17 | 18 | 12 | 11 | 7 | 4 | 3 | 0 |
| 10 | 37 | 27 | 21 | 17 | 32 | 23 | 15 | 16 | 11 | 10 | 7 | 3 | 2 | 0 |

Numbers indicate percentage values of reflectivity.

Go to www.focalpointlights.com for additional photometric data.