

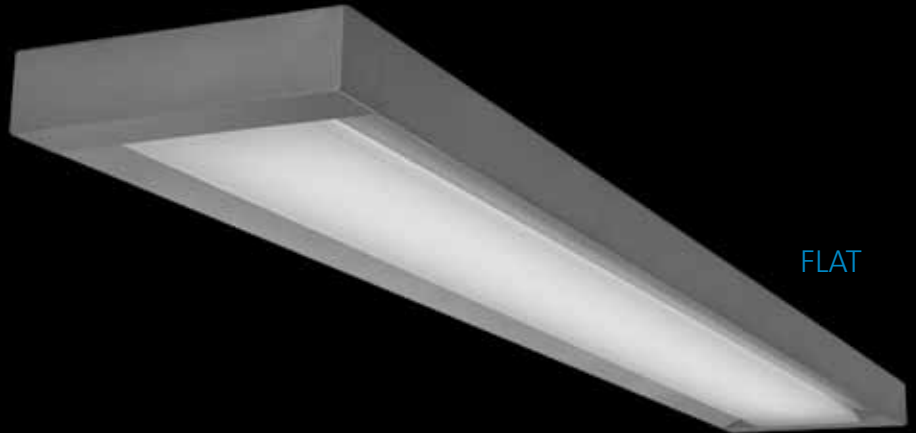


FOCAL POINT™

**VEER™**  
A NEW DIRECTION

**VEER** TAKES A  
DETOUR FROM THE ORDINARY,  
INFUSING TEXTURE AND FORM  
INTO A SLEEK NEW DIRECT/  
INDIRECT LUMINAIRE.

SMOOTH PLANES ON THE  
RECTILINEAR EXTERIOR TURN  
THE CORNER TO SUBTLE  
SWEEPING CURVES ON VEER'S  
FACE. TWO DISTINCT DIFFUSERS  
ADD VISUAL INTEREST WHILE  
ENHANCING PERFORMANCE.



FLAT



RADIAL



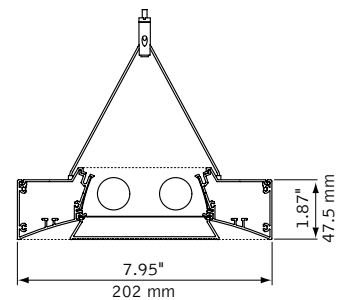
VEER'S DESIGN COMBINES THOUGHTFUL ENGINEERING,  
EXPERTLY TOOLED COMPONENTS AND ATTENTION TO  
DETAIL AT EVERY LEVEL. IT'S A NATURAL ADDITION TO  
FOCAL POINT'S OFFERING AND A VERSATILE NEW TOOL  
FOR DESIGNERS.

**VEER A NEW DIRECTION.**

# DESIGN

**PROFILES** The Flat Acrylic Diffuser adds understated drama with prominent angles that create visual contrast. The floating diffuser edge casts a glow of light across the sweeping side of the housing frame.

The Radial Acrylic Diffuser's subtle curves create a play of light and shadow across the housing face.



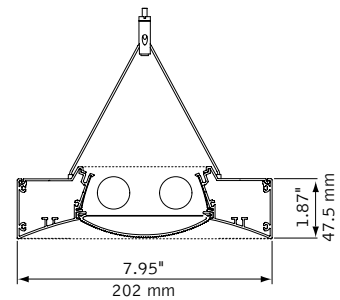
FLAT ACRYLIC DIFFUSER

**CONSTRUCTION** Subtle curves and crisp transitions are made possible with an extruded aluminum frame and extruded acrylic diffusers. Die-cast aluminum endcaps complete the rectilinear form while showing off Veer's central diffuser profile.

Diffusers add texture and visual interest with a ribbed pattern that minimizes lamp image.

Socket shadows are masked in 8' units with an aluminum insert applied between diffusers.

Continuous rows are quickly assembled with an integral joining system that locks simply by turning two screws.

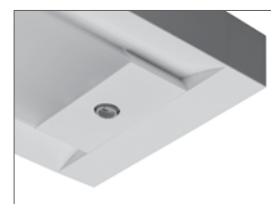


RADIAL ACRYLIC DIFFUSER

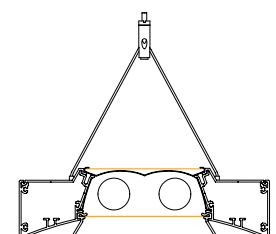
**INTEGRATED FEATURES** Optional daylight and occupancy sensors are installed on specially designed plates that integrate seamlessly maintaining the diffuser profile.

The internal debris shield, standard on all Veer configurations, helps maintain a clean appearance by catching dust, dirt and debris above the lens.

The addition of an optional concealed dust cover encloses the optic from above, allowing for ease of cleaning.



INTEGRATED SENSORS



DUST COVER  
& DEBRIS SHIELD

# PERFORMANCE

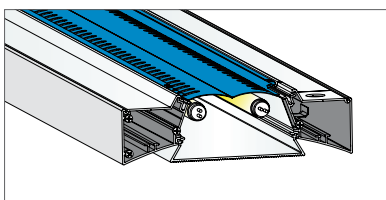
**DISTRIBUTION** Veer's standard direct/indirect distribution provides increased downlight over common linear systems, assisting designers in meeting today's light level and energy recommendations.

1 & 2 lamp T5/T5H0 & T8 configurations produce a 60% indirect/40% direct light distribution in most open optic configurations.

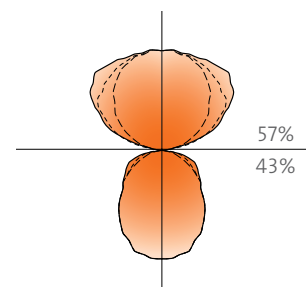
**EFFICIENCY** All open optic styles meet Focal Point's everGreen requirements of 80% or higher efficiency. Veer delivers up to 95.7% efficiency in T5 and 90.4% in T8.



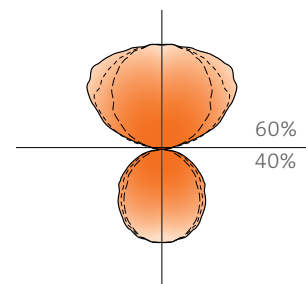
**DOWNLIGHT OPTICS** Optional DR optics provide the flexibility to add downlight to suit your application. Many environments can benefit from increased direct illumination, which can help to maintain light levels while potentially reducing lamps or watts. Most DR optics also provide indirect illumination that create a soft glow on the ceiling to minimize contrast and cave effect.\*



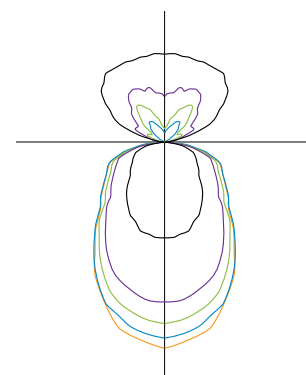
- OPEN OPTIC\*\* (STANDARD)
- DR0 (100% DOWNLIGHT)
- DR1 (UP TO 90% DOWNLIGHT)
- DR2 (UP TO 85% DOWNLIGHT)
- DR4 (UP TO 70% DOWNLIGHT)



2T5 FLAT DIFFUSER, OPEN OPTIC  
95.7% EFFICIENCY



2T5 RADIAL DIFFUSER, OPEN OPTIC  
93.0% EFFICIENCY



2T5 FLAT DIFFUSER  
DOWNLIGHT OPTICS

\*Actual percentages vary depending on lamping and shielding. For accurate percentages refer to IES test data available at [www.focalpointlights.com](http://www.focalpointlights.com).

# APPLICATION



**VEER** is at home in office spaces, educational environments, labs, libraries, conference rooms and other areas where direct/indirect illumination is desired. Simple aesthetics and a glowing appearance allow Veer to compliment interior architecture while comfortably supporting work activities. Take advantage of variable distributions to find the configuration that suits your space.

## 30x30 | 14' SPACING

	FLAT ACRYLIC LENS			RADIAL ACRYLIC LENS			FLAT ACRYLIC LENS			RADIAL ACRYLIC LENS		
	10' CEILING   24" SUSPENSION						8.5' CEILING   18" SUSPENSION					
2T5	36.5	3:1	7:1	35.1	3:1	7:1	37.8	4:1	8:1	36.3	4:1	8:1
2T5-DR1	41.9	4:1	3:1	39.6	4:1	3:1	43.4	5:1	3:1	41.1	5:1	3:1
2T5-DR2	41.3	4:1	4:1	38.9	4:1	4:1	43.0	5:1	3:1	40.4	5:1	4:1
2T5-DR4	40.7	4:1	5:1	39.1	4:1	5:1	42.2	4:1	5:1	40.5	4:1	6:1
1T5HO	33.1	3:1	8:1	31.8	3:1	8:1	32.7	4:1	9:1	31.4	4:1	9:1
2T8	35.1	3:1	7:1	34.0	3:1	7:1	36.3	4:1	8:1	35.2	4:1	8:1

- AVERAGE FOOTCANDLES
- WORKPLANE UNIFORMITY (AVERAGE:MINIMUM)
- CEILING UNIFORMITY (AVERAGE:MINIMUM)

Reflectances: 80/50/20

Light Loss Factors:  
T8 - 0.75  
T5/T5HO - 0.85

Light levels calculated in AGI-32. Calculations do not include any furniture or partitions.

## 30x30 | 10' SPACING

	FLAT ACRYLIC LENS			RADIAL ACRYLIC LENS			FLAT ACRYLIC LENS			RADIAL ACRYLIC LENS		
	10' CEILING   24" SUSPENSION						8.5' CEILING   18" SUSPENSION					
1T5	26.9	3:1	7:1	25.9	3:1	7:1	26.6	3:1	8:1	25.5	3:1	9:1
1T5-DR1	29.3	3:1	2:1	27.4	3:1	3:1	30.6	4:1	3:1	28.7	4:1	3:1
1T5-DR2	28.4	3:1	3:1	26.7	3:1	3:1	29.7	4:1	3:1	28.0	4:1	3:1
1T5-DR4	29.5	3:1	4:1	28.2	3:1	4:1	30.8	4:1	5:1	29.5	4:1	5:1
1T5HO	46.5	3:1	7:1	44.7	3:1	7:1	45.0	3:1	8:1	44.0	3:1	8:1
2T5	51.3	3:1	6:1	49.4	3:1	6:1	53.4	3:1	7:1	51.4	3:1	7:1
1T8	24.1	3:1	6:1	23.1	3:1	6:1	25.0	3:1	7:1	24.0	3:1	7:1
2T8	49.2	3:1	6:1	47.7	3:1	6:1	51.2	3:1	7:1	49.6	3:1	7:1

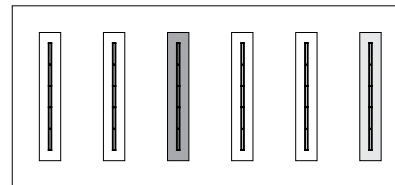


**SPECIAL APPLICATION** requirements are easily met with Veer's variety of options. Select a dust cover to achieve a sealed, cleanable profile for healthcare or school applications. Use DR optics to direct light to task surfaces in labs, or reach needed footcandle levels with higher ceilings. Integrated sensors can function with daylight and other building systems.

34'x74' | 9' CEILING | 18" SUSPENSION | 12' SPACING

	FLAT ACRYLIC LENS					
	GENERAL		CENTER TABLE		PERIMETER TABLE	
2T5-DR1	50.1	6:1	80.1	3:1	75.6	3:1
2T5-DR2	49.7	5:1	78.2	3:1	73.7	3:1

	RADIAL ACRYLIC LENS					
	GENERAL		CENTER TABLE		PERIMETER TABLE	
2T5-DR1	47.3	6:1	73.1	3:1	69.1	3:1
2T5-DR2	54.9	5:1	83.5	3:1	78.9	3:1



■ AVERAGE FOOTCANDLES  
 ■ WORKPLANE UNIFORMITY (AVERAGE:MINIMUM)

Reflectances: 80/50/20 | Light Loss Factor: 0.85 | Workplane: 36" | Table Reflectance: 50%  
 Light levels calculated in AGI-32.

## ORDERING

- fixture series  
 Veer FVRS
- shielding  
 Flat Acrylic Diffuser ACF  
 Radial Acrylic Diffuser ACR
- optional downlight accessories  
 100% downlight DR0  
 up to 90% downlight DR1  
 up to 85% downlight DR2  
 up to 70% downlight DR4
- lampping  
 1 Lamp T5 1T5  
 2 Lamp T5 2T5  
 1 Lamp T5HO 1T5HO  
 2 Lamp T5HO 2T5HO  
 1 Lamp T8 1T8  
 2 Lamp T8 2T8
- circuit  
 Single Circuit 1C  
 Dual Circuit 2C  
 (Multiple lamp luminaires only)
- voltage  
 120 Volt 120  
 277 Volt 277  
 347 Volt 347
- ballast  
 Electronic Instant Start <20% THD E  
 Electronic Program Start <10% THD S  
 Electronic Dimming Ballast D
- mounting  
 24" Cable Suspension C24  
 48" Cable Suspension C48  
 96" Cable Suspension C96  
 (Specify "J" in place of "C" for 5" dia. canopies at power feed and 2" dia. canopies at non-feed locations)  
 (Consult factory for sloped ceiling applications)

### FVRS

### factory options

- Dust Cover DC \_\_\_\_\_  
 Emergency Circuit EC \_\_\_\_\_  
 Emergency Battery Pack EM \_\_\_\_\_  
 HLR/GLR Fuse FU \_\_\_\_\_  
 Include 3000K Lamp L830 \_\_\_\_\_  
 Include 3500K Lamp L835 \_\_\_\_\_  
 Include 4100K Lamp L841 \_\_\_\_\_  
 Lutron™ Daylight Sensor (EcoSystem ballast required) LY1 \_\_\_\_\_  
 Lutron™ Sensor Feed (EcoSystem ballast required) SF \_\_\_\_\_  
 Philips® Daylight Sensor (0-10V dimming ballast required) PY1 \_\_\_\_\_  
 WattStopper™ Daylight Sensor (0-10V dimming ballast required) WY1 \_\_\_\_\_  
 WattStopper™ Occupancy Sensor WO1 \_\_\_\_\_
- finish  
 Matte Satin White WH \_\_\_\_\_  
 Titanium Silver TS \_\_\_\_\_
- luminaire length  
 4' 4' \_\_\_\_\_  
 8' 8' \_\_\_\_\_  
 12' 12' \_\_\_\_\_  
 16' 16' \_\_\_\_\_  
 20' 20' \_\_\_\_\_  
 24' 24' \_\_\_\_\_
- remotes  
 (specify quantity)  
 WattStopper™ Daylight Setup Remote (required for daylight programming, one included per order) WYSR \_\_\_\_\_  
 WattStopper™ Occupant Controller WOR \_\_\_\_\_



FLAT ACRYLIC DIFFUSER



RADIAL ACRYLIC DIFFUSER



©2010 Focal Point LLC, 4141 S. Pulaski Road, Chicago, Illinois 60632, [www.focalpointlights.com](http://www.focalpointlights.com), T 773.247.9494, F 773.247.8484  
All rights reserved. "Focal Point", "The Art of Light", everGreen, Veer and the Light-Ray Graphic are trademarks or registered trademarks of Focal Point, LLC. Products shown in this brochure may be covered by U.S. patents and patents pending.

Visit [focalpointlights.com](http://focalpointlights.com) for specifications and other details on our entire Focal Point catalog.



07/10 MKT1089