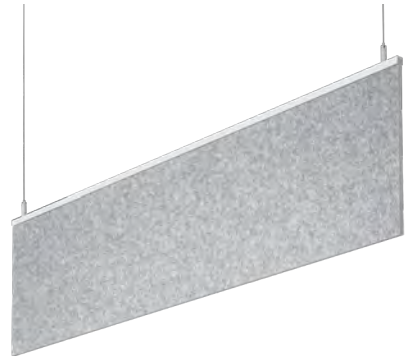


**FOCAL POINT®**

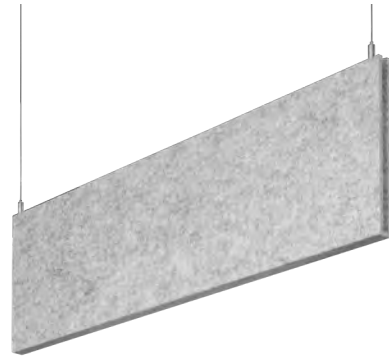
Bringing It All To Light®

# ACOUSTIC LOOKBOOK

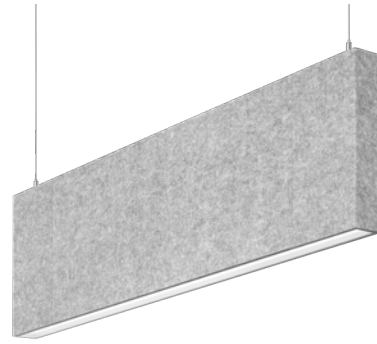
TruBlade®



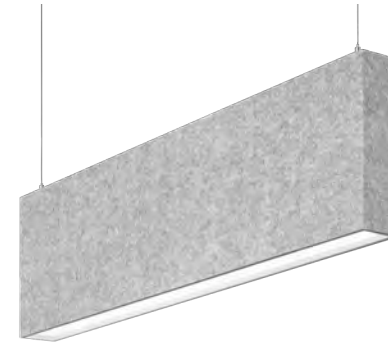
AirCore Blade®



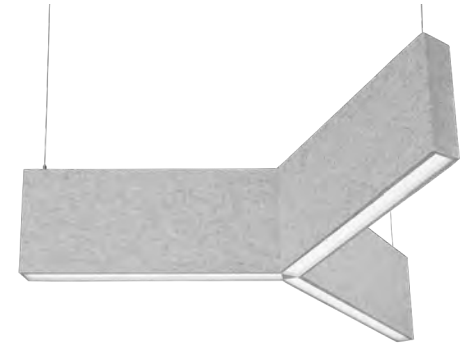
Seem® 1 Acoustic



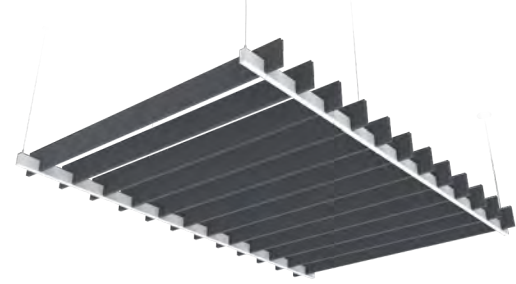
Seem® 2 Acoustic



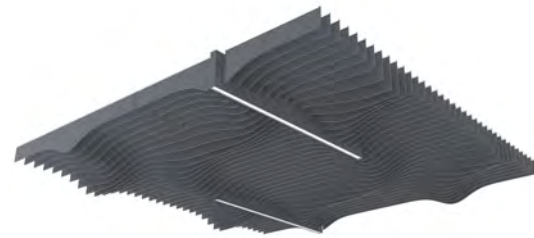
Seem® 1 Acoustic Trio



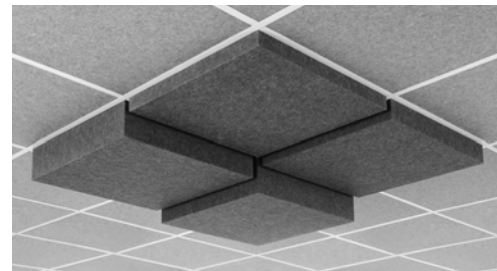
AirCore Bridge®



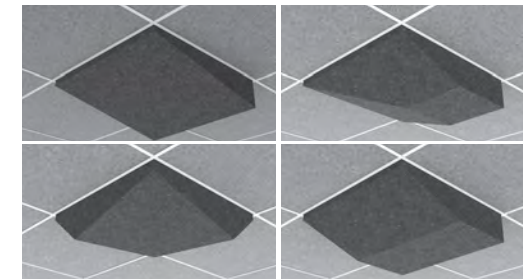
Mora®



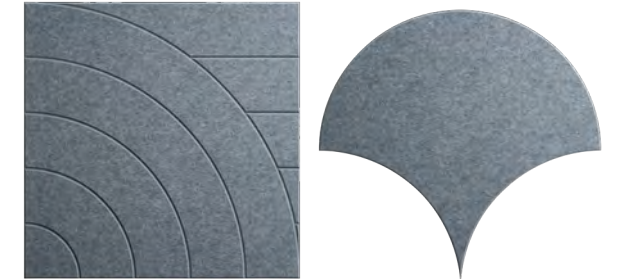
Nivo® Acoustic



Ori®



TruTile™



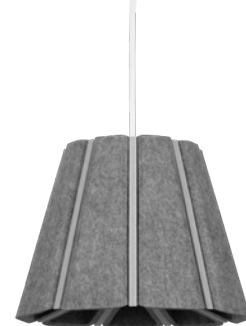
Polina™



Skydome Edge® Acoustic



Blume® 3 & 4



Zyl® 3 & 4



Eave®



Lia™





LIMESTONE

DEEP WATER

TruBlade® & Seem® 2 Acoustic



TruBlade® & Seem® 1 Acoustic

BRICK RED



SILVER GRAY

AirCore Blade® & Seem® 1 Acoustic



AirCore Blade® & Seem® 1 Acoustic

SILVER GRAY



NATURAL LINEN

AirCore Blade® & Seem® 2 Acoustic



Seem® 1 Acoustic

CINNAMON

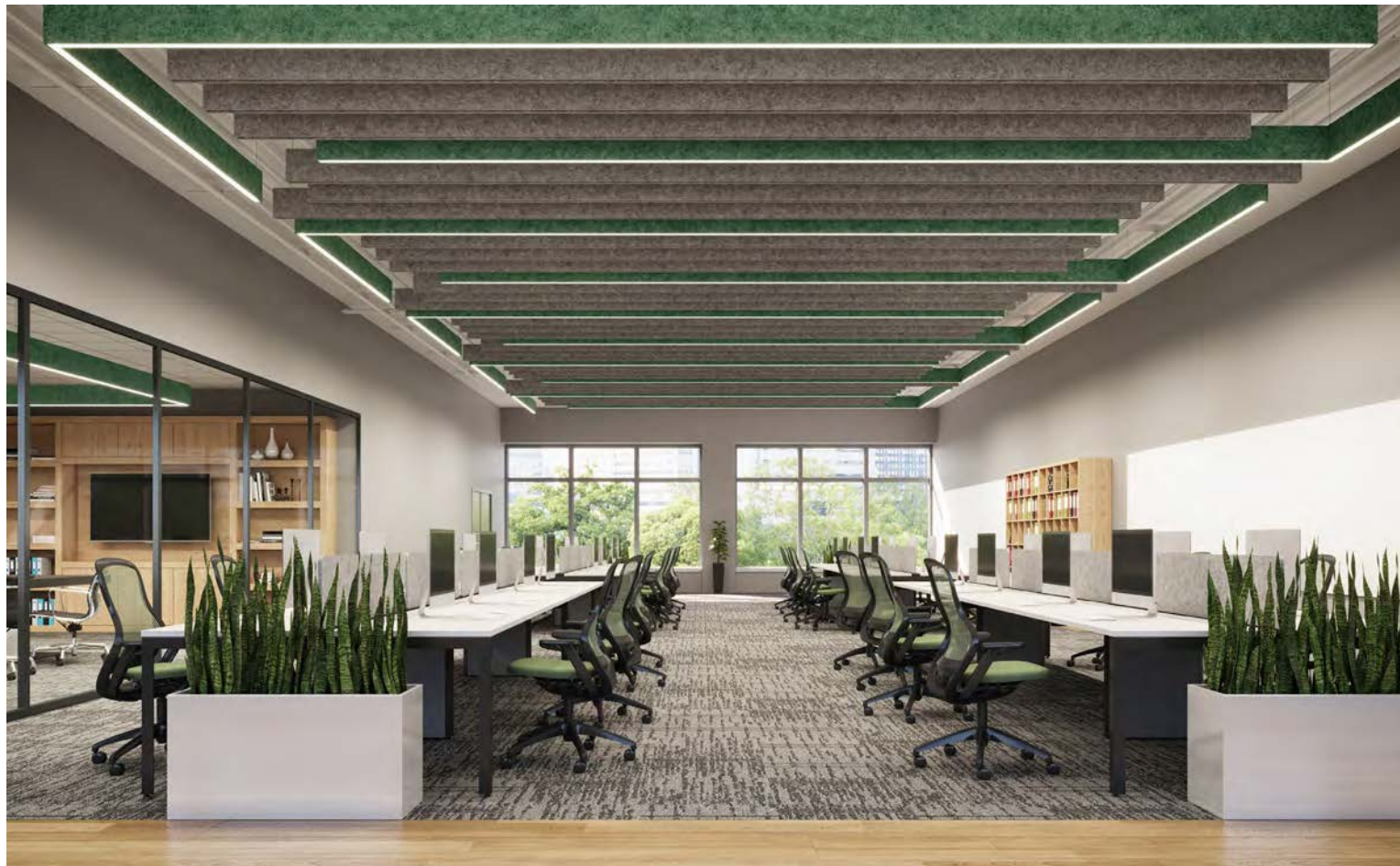




SILVER GRAY

EMERALD GREEN

Seem® 1 Acoustic

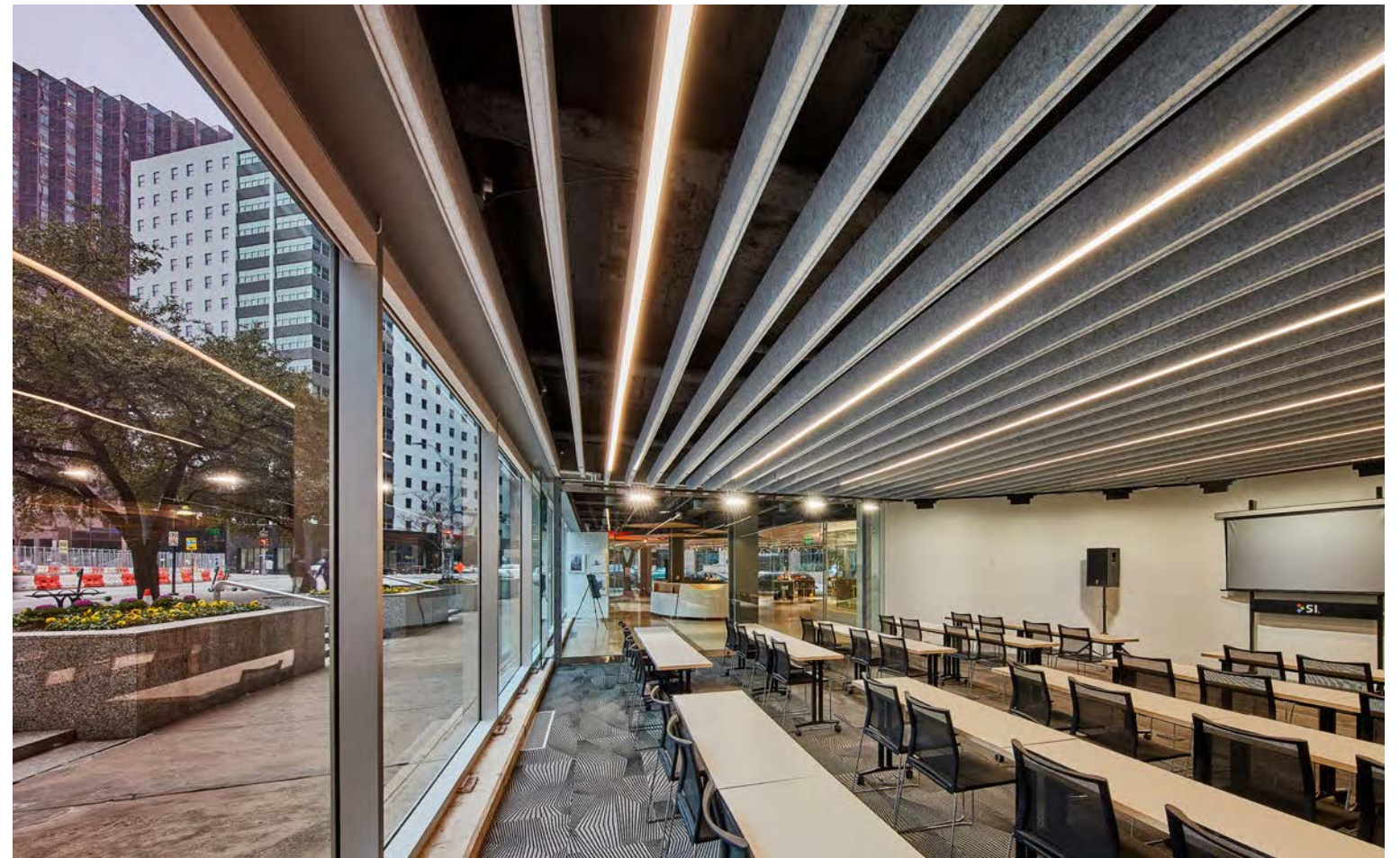
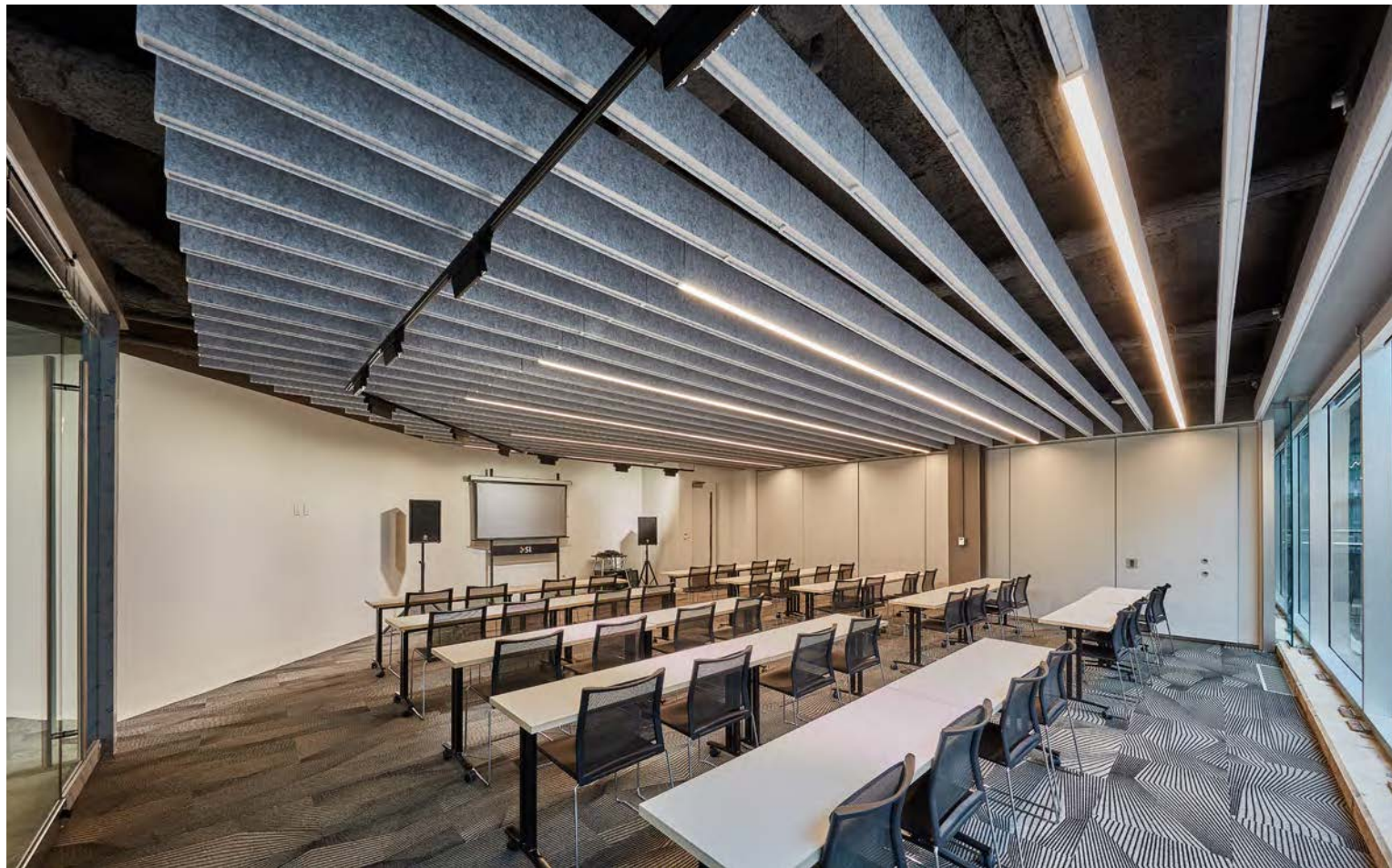




SILVER GRAY

# Seem® 1 Acoustic

Project: AD EX | Dallas, TX Architect: Omniplan Photography: Craig D. Blackmon, FAIA





DENIM BLUE

Seem® 1 Acoustic



Seem® 1 Acoustic

SILVER GRAY

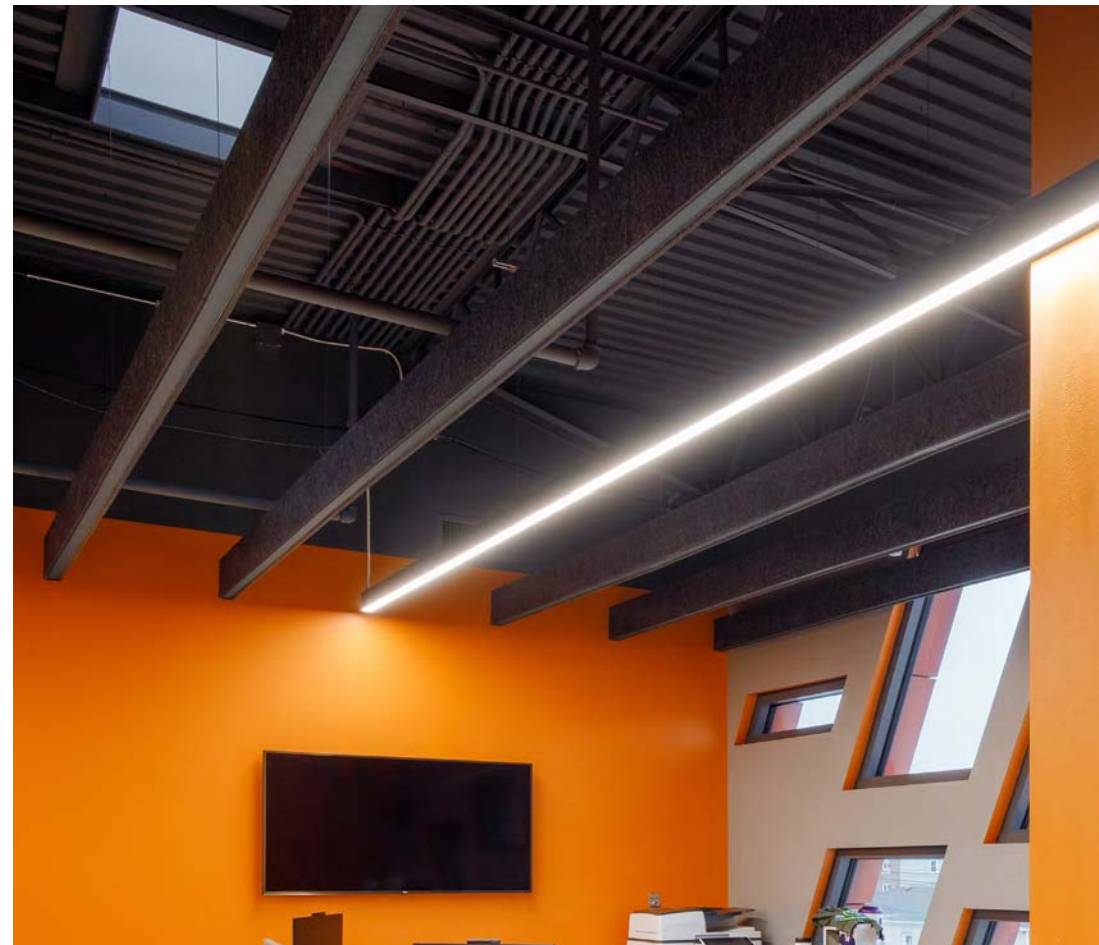
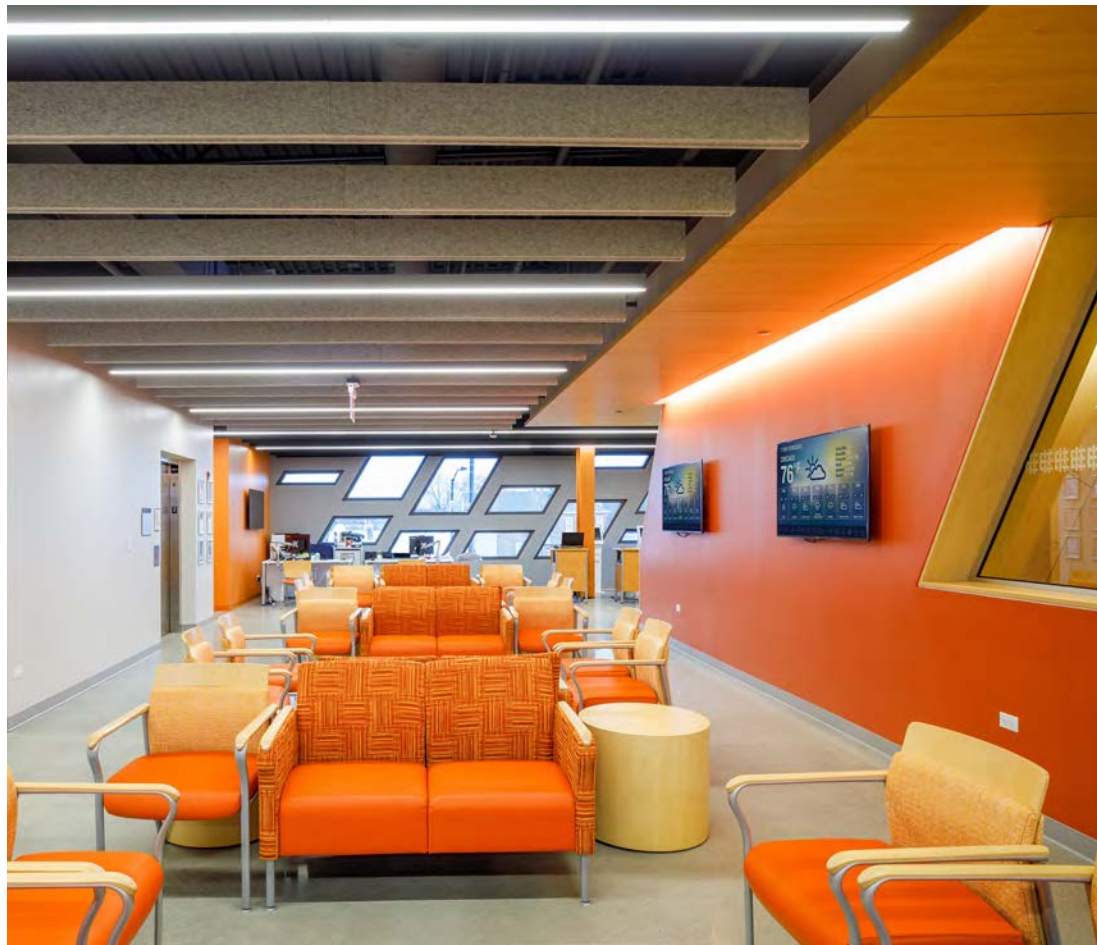


SILVER GRAY

CHARCOAL GRAY

# Seem® 1 Acoustic

Project: Esperanza Healthcare | Chicago, IL Architect: Juan Gabriel Moreno Architects (JGMA) Photography: John Sternisha







SILVER GRAY

CLASSIC WHITE

# Seem® 1 Acoustic

Project: Radiology Partners | El Segundo, CA Architect: Frank Gehry Architects Photography: L2 Specialties



Seem® 1 Acoustic

LIME GREEN



SILVER GRAY

# Seem<sup>®</sup> 1 Acoustic

Project: KBM Hogue | Sacramento, CA Architect: RMW Architecture & Interiors Photography: Chad Davies



Seem<sup>®</sup> 1 Acoustic

CLASSIC WHITE

Project: Legacy Trust | Houston, TX Architect: Dillon Kyle Architects Photography: Perter Molick



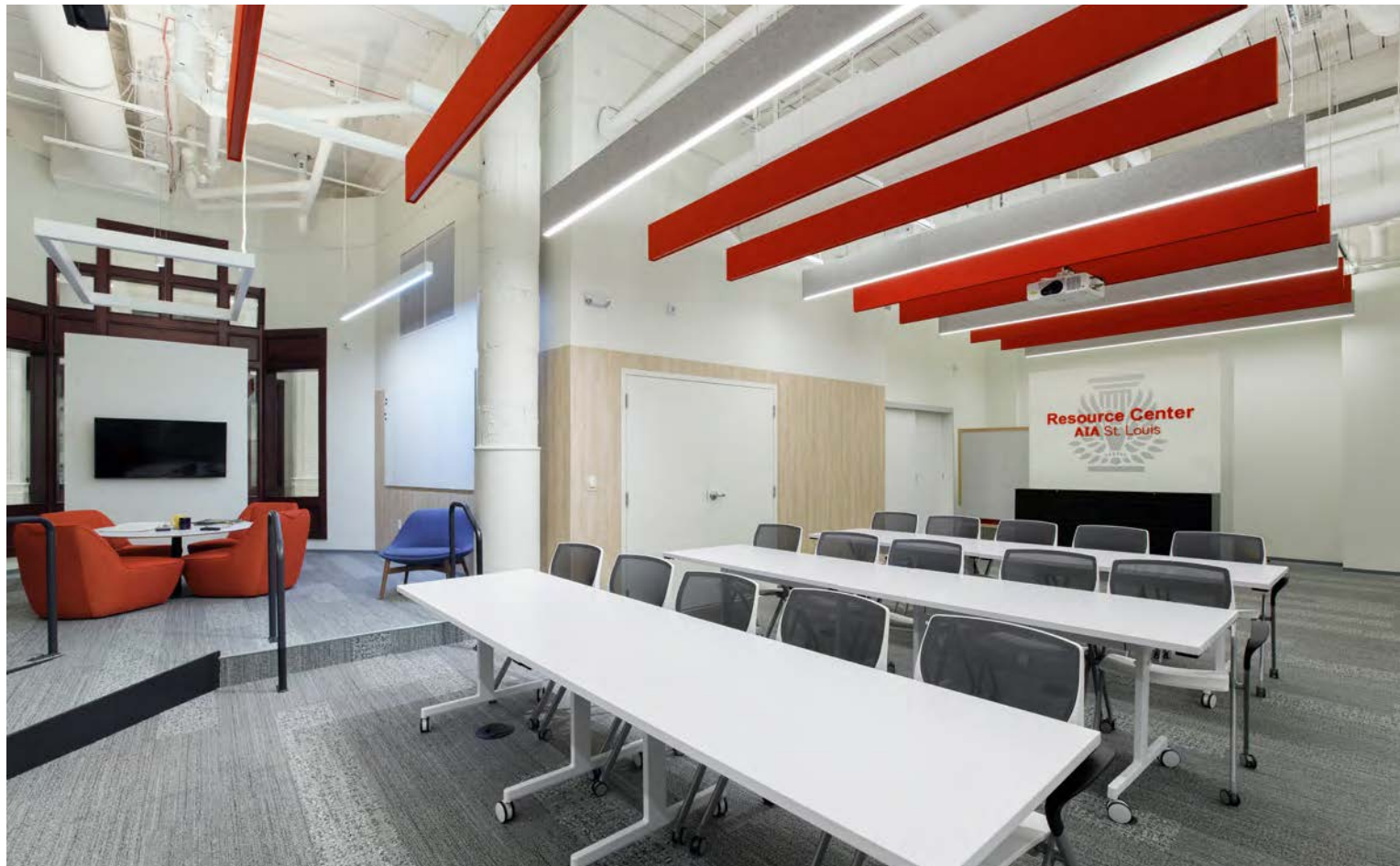
Resource Center  
AIA St. Louis

SILVER GRAY

CHERRY RED

# Seem<sup>®</sup> 1 Acoustic

Project: AIA | St. Louis, MO Architect: TAO + LEE Associates Photography: John Sternisha





MIDNIGHT BLUE

SHADOW GRAY

# Seem<sup>®</sup> 1 Acoustic

Project: RHO | Raleigh, NC Architect: Little Diversified Architectural Consulting Photography: Monica Slaney | photographie:fourseven



# Seem<sup>®</sup> 1 Acoustic

SLATE

Project: CHSQA | Boise, ID Photography: John Sternisha





SHADOW GRAY

# Seem<sup>®</sup> 1 Acoustic

Project: Sterling Bay | Chicago, IL Architect: Perkins + Will Photography: John Sternisha





NATURAL LINEN

Seem® 1 Acoustic & Seem® 1 Acoustic Louver



Seem<sup>®</sup> 1 Acoustic Louver & Mora<sup>®</sup> Arch

HAZELWOOD



BLUSH

SEAFOAM

AirCore Blade<sup>®</sup>, Seem<sup>®</sup> 1 Acoustic Louver & Mora<sup>®</sup>





BRICK RED

HAZELWOOD

Seem<sup>®</sup> 2 Acoustic



Seem® 2 Acoustic - Custom

SILVER GRAY





DENIM BLUE

Seem® 1 Acoustic Trio



Seem® 1 Acoustic Trio & Seem® 1 Acoustic

CHARCOAL GRAY

PURE BLACK



PINEAPPLE

Seem® 1 Acoustic Trio



LIME GREEN

CORNFLOWER BLUE

Seem® 1 Acoustic Trio



CORNFLOWER BLUE

# AirCore Bridge™ – Cantilever



**AirCore Bridge™** - Truss

CHARCOAL GRAY



SLATE

SHADOW GRAY

PINEAPPLE

# AirCore Bridge™ - Cantilever, Truss & Cantilever Wave



**AirCore Bridge™** – Cantilever & Truss

PINEAPPLE

CORNFLOWER BLUE





BLUSH

**Mora® Build** – Wave



Mora® Build - Wave

CLASSIC WHITE



PINEAPPLE

**Mora® Build** - Arch



Mora® Build – Arch

LIMESTONE



SEAFOAM

Mora® Create - Ripple



Mora® Create - Alpine

SLATE



Co72ac kwawu haktamih ku srowilut; waw7hikaw zwawen ku smawu  
ku pahetall i s7owalnicweta ku pa7ewantall i takomihkailha slaxd  
all i s7owalnicweta wa7 nahantall i cawna szayens i  
ucuwalnicwa.  
I wa7 tohazimihall i wa7 ku pahatilla i smawala wa7 tsit kwaw  
abitsa mite7 pite7 i takama s7owanen mite7 i takama slaxd - ni  
s7owalnicwa wa7 ku anastilla i smawalnikailha.  
Loma Wawast'7 Williams, Lil'watul

You're not learning a word; you're learning a world.  
Language reclamation is about expanding the diversity of our  
knowledge because language is an expression of the accumulated  
experiences of people.  
Those who do revitalization work say that biodiversity and knowled  
diversity are one and the same - it is work that makes our world bet  
Dr. Loma Wawast'7 Williams,  
Member of Lil'wat First Nation

Mora® Inspire - custom pattern & color



VENDING MACHINE

VENDING MACHINE

Mora<sup>®</sup> Inspire

SLIVER GRAY





NATURAL LINEN

HAZELWOOD

Nivo® Acoustic



Nivo® Acoustic

CORNFLOWER BLUE



CORNFLOWER BLUE

DENIM BLUE

MIDNIGHT BLUE

Ori®





CINNAMON

SHADOW GRAY

Ori®



Ori®

HAZELWOOD



HAZELWOOD

NATURAL LINEN

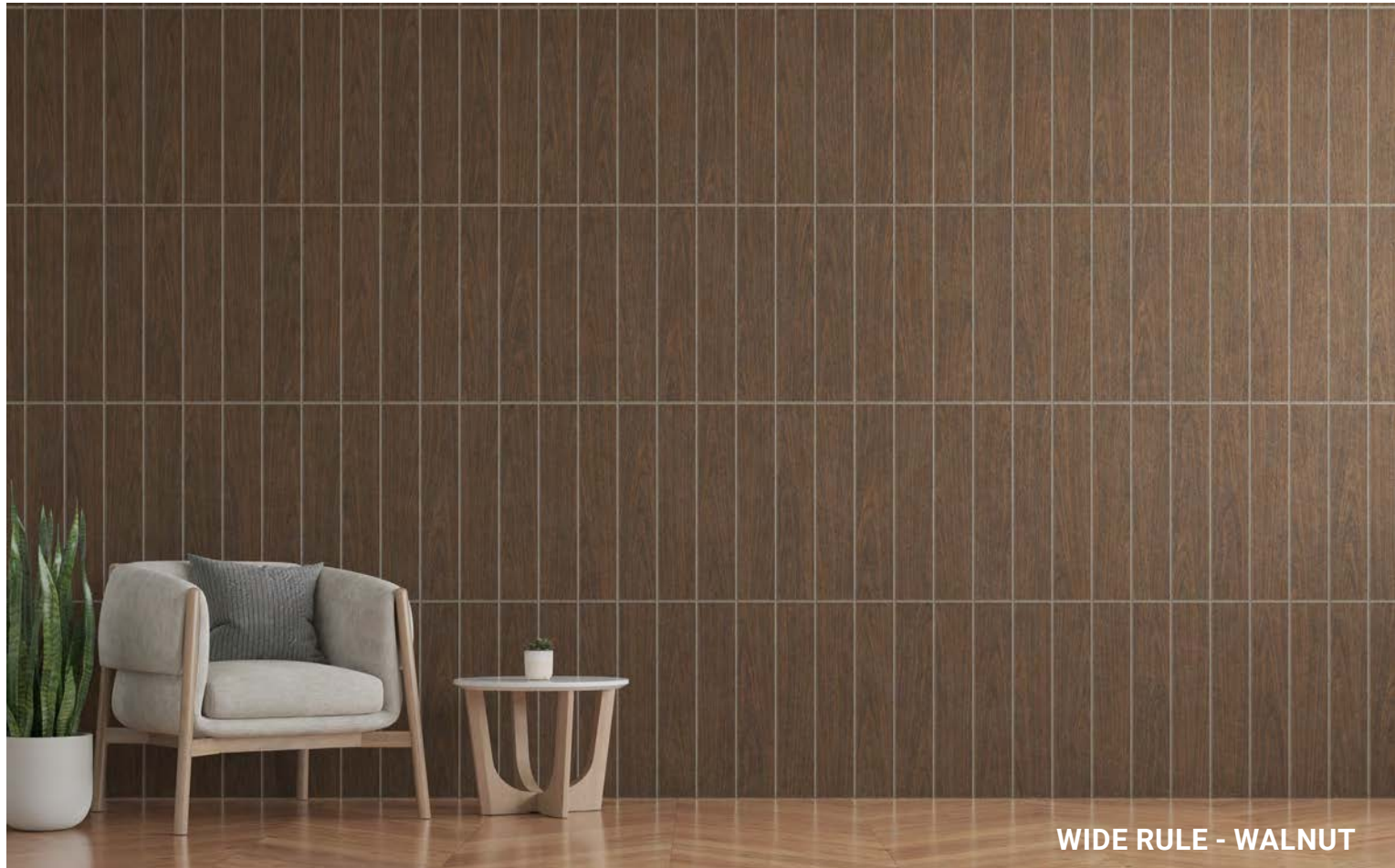
Ori®



LIGHT OAK

**TruTile™ Designs** - Multitrack







SEAFOAM

**TruTile™ Designs** - Double Arc



TruTile™ Designs - Double Arc

MIDNIGHT BLUE



PEARL ICE

**TruTile™ Textures** - Pinwale & Feathercord



**TruTile™ Designs - Lattice**

SILVER GRAY



BLUSH

LIGHT OAK

**TruTile™ Shapes - Scallop**





CLASSIC WHITE

SILVER GRAY

Polina™





CLASSIC WHITE

SILVER GRAY

Polina™



CLASSIC WHITE

SILVER GRAY

Polina™





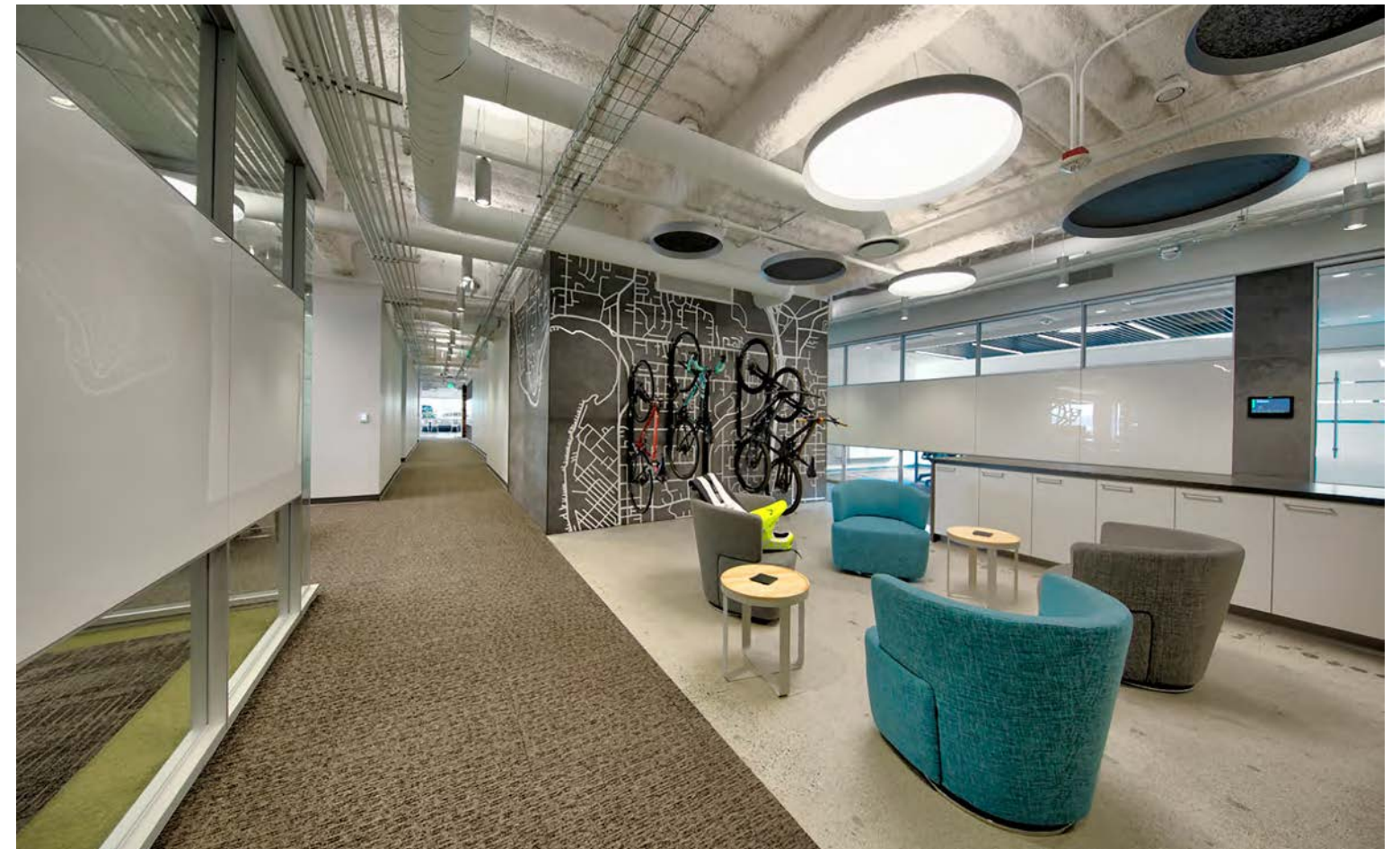
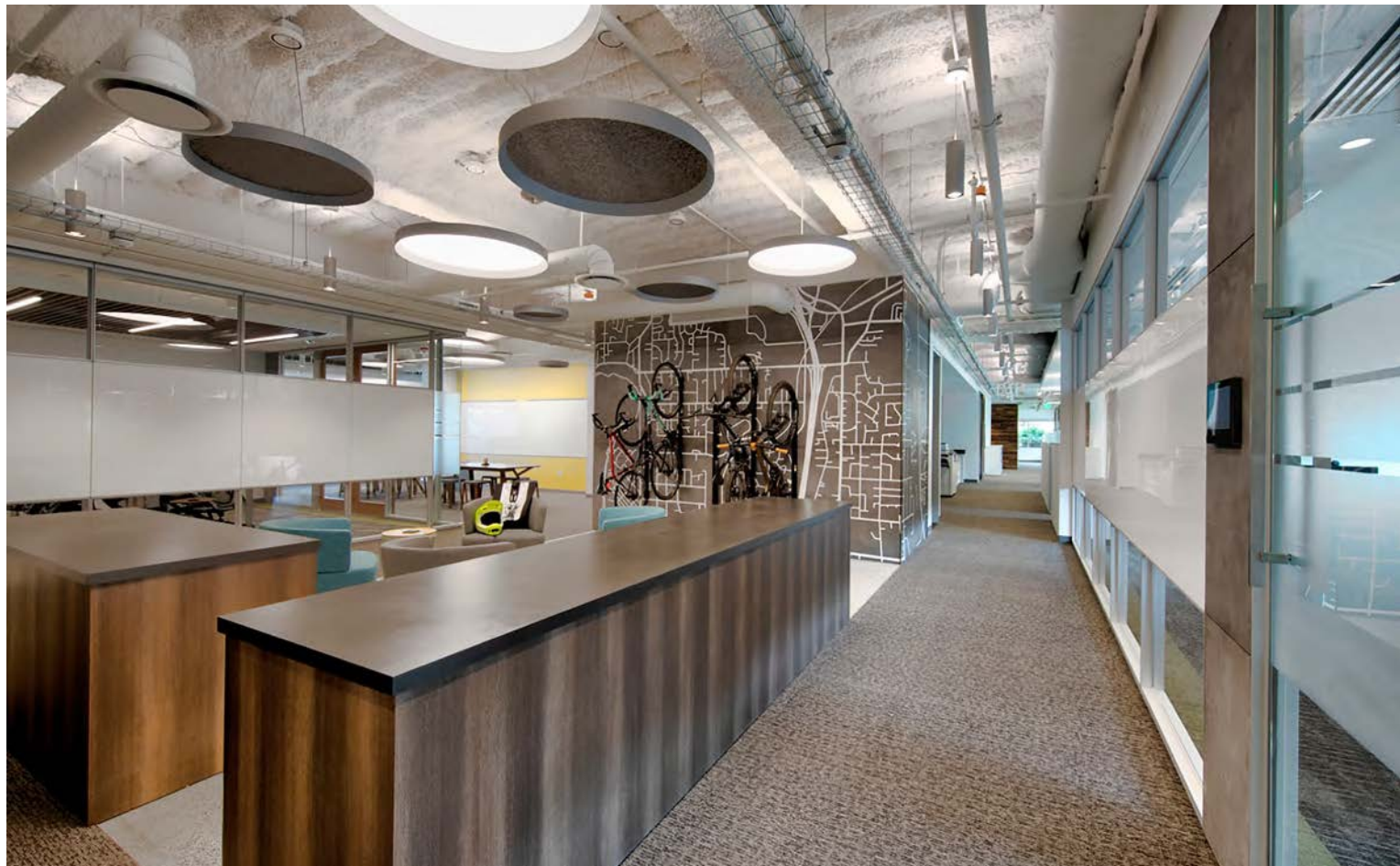
LIME GREEN

SHADOW GRAY

SLATE

# Skydome Edge® Acoustic

Project: Commercial Office | Kirkland, WA Architect: JPC Architects Photography: Dean Wallace Photo





PINEAPPLE

DEEP PURPLE

PEARL ICE

SLATE

Skydome Edge® Acoustic



PINEAPPLE

CHERRY RED

DENIM BLUE

Blume® 3 & 4



SLATE

Zyl® 3





BERRY

CARROT

CORNFLOWER BLUE

HAZELWOOD

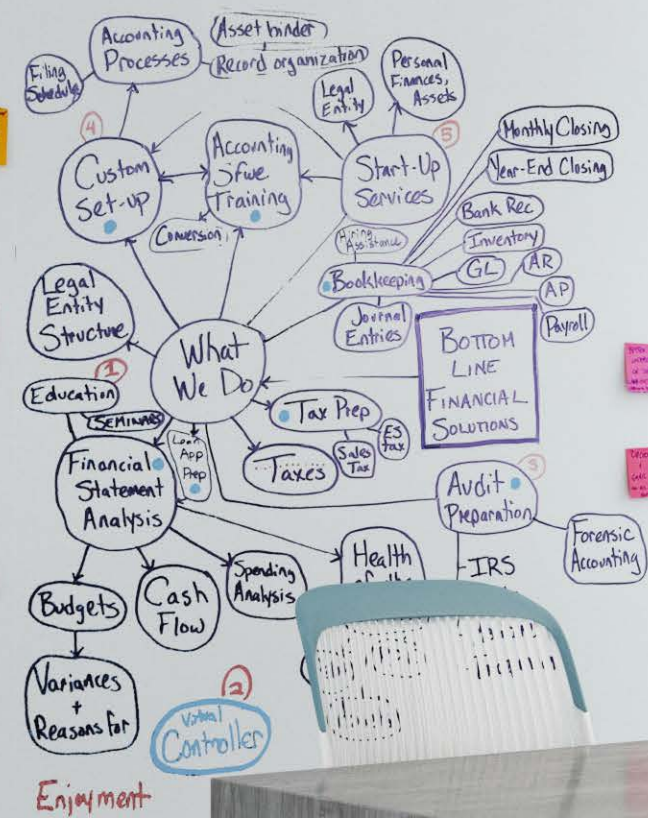
Zyl® 4



SHADOW GRAY

WHITE OAK

Eave®



Sticky notes on the wall:

- Legal Entity Structure
- Accounting Software Training
- Conversion
- Journal Entries
- Bookkeeping
- Financial Statement Analysis
- Budgets
- Virtual Controller
- Enjoyment

BLUSH

ESPRESSO OAK

Eave®



CARROT

WHITE OAK

Eave®



DEEP WATER

AMBER OAK

Eave®



LIME GREEN

WHITE OAK

Eave®



WHITE

EMERALD GREEN

Lia™



MODEST MUSHROOM

NATURAL LINEN

Lia™





WHITE

SLATE

Lia™



WHITE

SILVER GRAY

BLACK

DEEP WATER

Lia™



PEDIATRICS

Clinic Reception  
Elevators  
Cafeteria  
Patient Education →

Clinic Reception  
Elevators  
Cafeteria  
Patient Education →

WHITE

Lia™

SEAFOAM

# Acoustic Material Colors



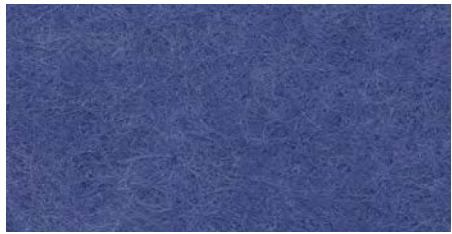
Deep Purple



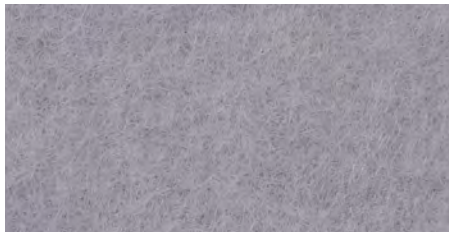
Midnight Blue



Denim Blue



Cornflower Blue



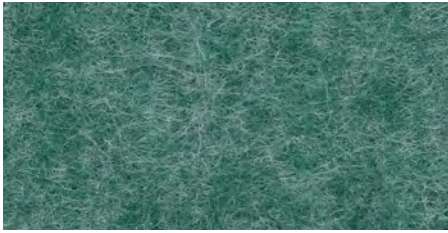
Pearl Ice



Deep Water



Emerald Green



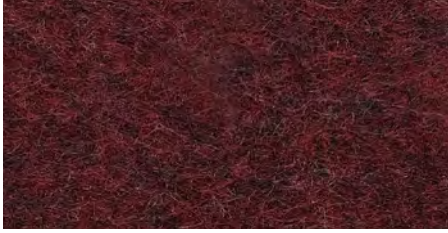
Seafoam



Pineapple



Carrot



Brick Red



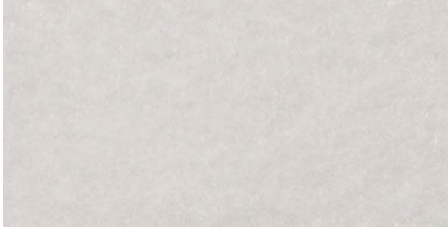
Berry



Cherry Red



Blush



Classic White



Natural Linen



Limestone



Hazelwood



Cinnamon



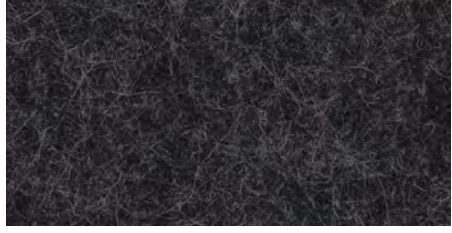
Silver Gray



Shadow Gray



Slate



Charcoal Gray



Pure Black

## THE NATURALS (25% SCALE)



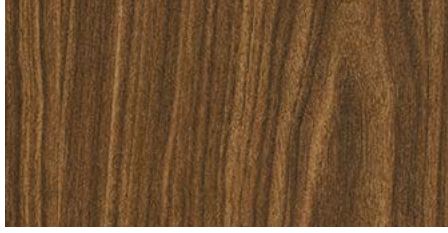
Light Oak



Gray Elm



Chestnut



Walnut

## Eave® End Cap Colors



White Oak



Amber Oak



Espresso Oak

## Lia™ Housing/Canopy/Stem Colors



Black



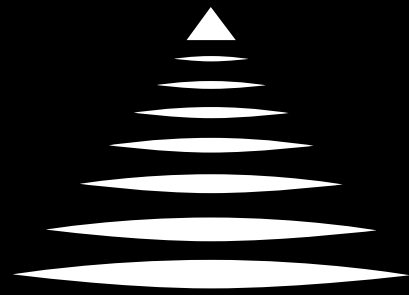
White



Titanium Silver



Modest Mushroom



**FOCAL POINT®**

Bringing It All To Light®

# ACOUSTIC LOOK BOOK

