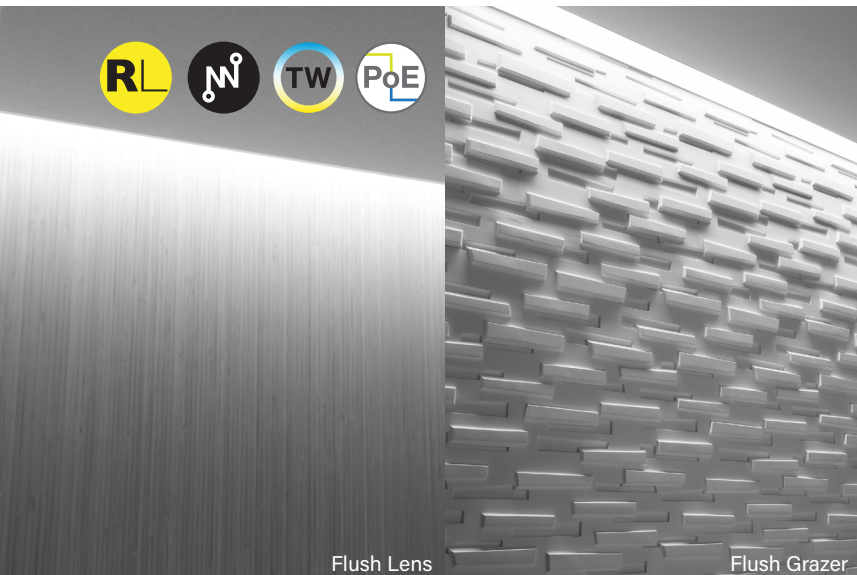


Seem® 4

LED PERIMETER



Flush Lens

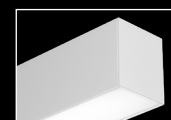
Flush Grazer



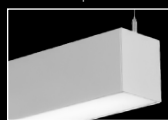
recessed companion



wall to ceiling companion

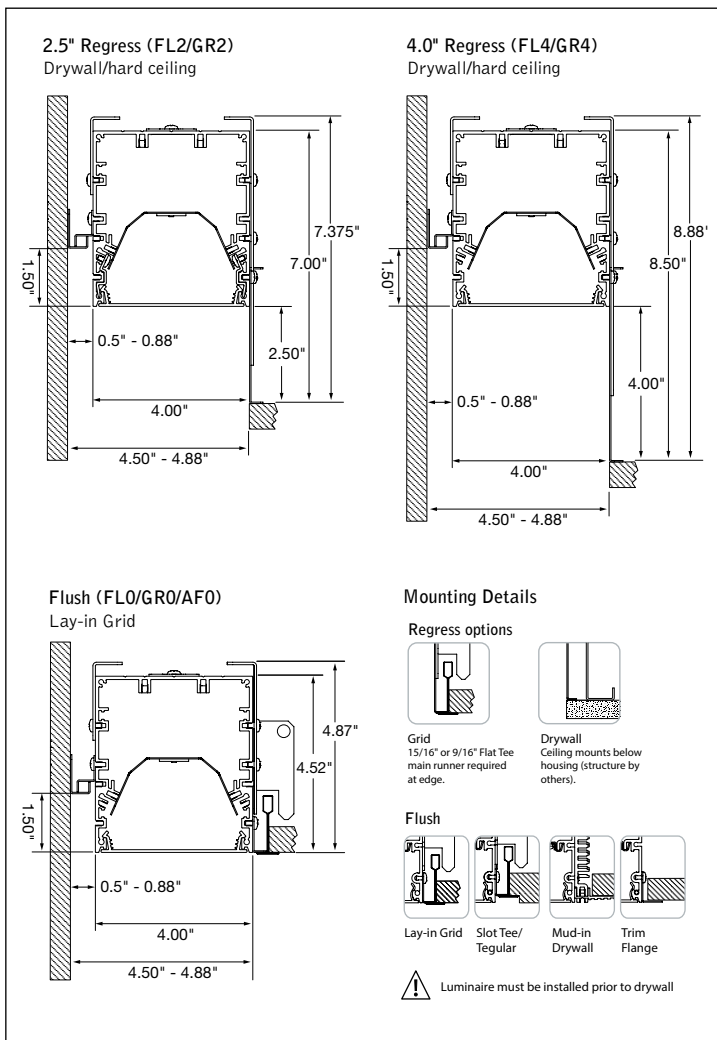


wall mount companion



suspended companion

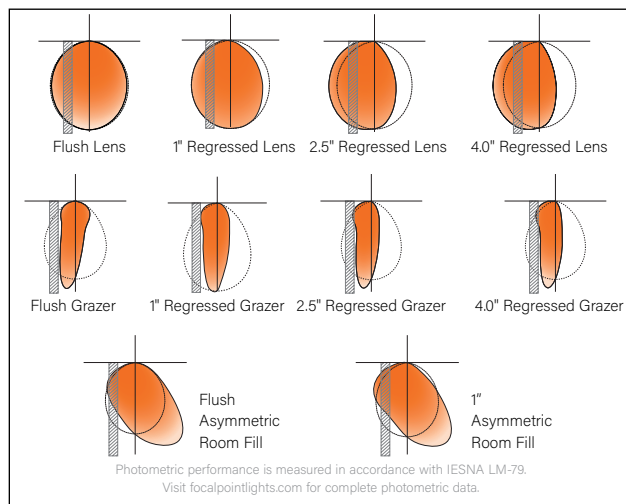
DIMENSIONAL DATA



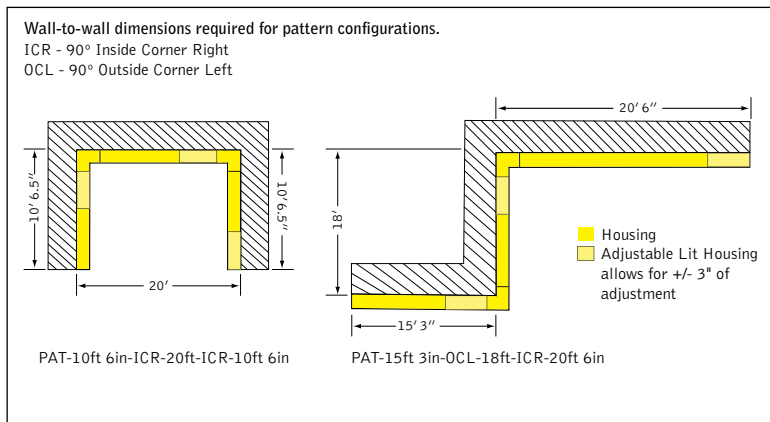
FEATURES

- Seem 4 perimeter provides a glowing transition between ceiling and wall with Flush, 1" regress, 2.5" regress or 4.0" regress lenses.
- Grazer optic provides even vertical illumination and adds drama to a space by highlighting textured walls and architectural details.
- Asymmetric Room Fill optic provides best efficacy and uniformity to light rooms and corridors from the perimeter.
- Adjustable housing option provides flexibility with +/- 3 inch adjustability for wall-to-wall illumination.
- Tunable White: Supports human activity, well-being, and preferences with a light quality that evolves throughout the day.
- Connected Solutions: Integrates with wired and wireless building lighting control systems.
- PoE compatible: Integrates with Power over Ethernet lighting systems via standard, low-voltage wires.

DISTRIBUTIONS



PATTERN CONFIGURATIONS



4' PERFORMANCE CHARTS

Lumen Output	Nominal Lumens	FL0		FL1		FL2		FL4	
		Tested System Watts	LPW	Tested System Watts	LPW	Tested System Watts	LPW	Tested System Watts	LPW
275LF	1100	9.1	121	9.2	119	10.0	110	9.8	112
375LF	1500	11.7	129	11.7	128	13.2	114	12.5	120
625LF	2500	19.7	127	18.9	133	22.2	113	21.0	119
875LF	3500	27.9	125	27.5	127	31.4	111	29.7	118
1000LF	4000	32.2	124	31.6	126	36.4	110	34.3	117

Based on 3500K, 80 CRI, 4' lengths. Lumen multipliers: 90+ CRI = 0.87. Lumen output may vary +/- 5%. Actual wattage may vary +/- 5%.

Lumen Output	Nominal Lumens	GR0		GR1		GR2		GR4		AF0		AF1	
		Tested System Watts	LPW	Tested System Watts	LPW	Tested System Watts	LPW	Tested System Watts	LPW	Tested System Watts	LPW	Tested System Watts	LPW
275LF	1100	8.8	125	8.7	126	9.0	122	9.2	119	8.7	127	8.8	125
375LF	1500	11.1	135	11.0	136	11.4	132	11.7	128	10.9	137	11.1	135
625LF	2500	17.8	140	17.6	142	18.2	137	18.8	133	17.5	143	17.9	140
875LF	3500	25.8	135	25.5	137	26.5	132	27.4	128	25.3	138	25.9	135
1000LF	4000	29.7	135	29.3	136	30.4	131	31.6	127	29.1	137	29.8	134

Based on 3500K, 80 CRI, 4' lengths. Lumen multipliers: 90+ CRI = 0.87. Lumen output may vary +/- 5%. Actual wattage may vary +/- 5%.

STANDARD WHITE

Luminaire Series

Seem 4 LED Perimeter **FSM4PR**

Housing Type

Adjustable Lit Housing **ALH**

(Allows for +/- 3" adjustment to overall run length, 3' minimum luminaire length.)

Fixed Housing **FXH**

(not recommended for wall to wall installations)

Shielding

Flush Lens* **FL0**

1.0" Regress **FL1**

2.5" Regress **FL2**

4.0" Regress **FL4**

Flush Grazer* **GR0**

1.0" Regress Grazer **GR1**

2.5" Regress Grazer **GR2**

4.0" Regress Grazer **GR4**

Flush Asymmetric Room Fill* **AF0**

1.0" Regress Asymmetric Room Fill **AF1**

(Not available with Unlit Sliding Sleeves - SSB)

Lumen Output

275 Lumens per foot **275LF**

(Not available with Lutron Drivers.)

375 Lumens per foot **375LF**

(Not available with LH1.)

625 Lumens per foot **625LF**

(3' minimum with LH1.)

875 Lumens per foot **875LF**

1000 Lumens per foot **1000LF**

Color Temperature

2700K, 80+ CRI or 90+ CRI **27K or 927K**

3000K, 80+ CRI or 90+ CRI **30K or 930K**

3500K, 80+ CRI or 90+ CRI **35K or 935K**

4000K, 80+ CRI or 90+ CRI **40K or 940K**

Circuits & Zones

1 Circuit, non-emergency **1C**

Consult Ordering Guide on page 5 for multiple circuiting and zoning options

Voltage

120/277 UNV Volt **UNV**

Low Voltage **LV**

Control System & Dimming Level

0-10V - 10% Dimming **LD1**

0-10V - 1% Dimming **L11**

Low Voltage, PoE compatible **LVN**

(No driver. Not available with EM or EC. LV Voltage only.)

Lutron Hi-Lume EcoSystem (LDE1) - **LH1**

1% Dimming

DALI 1% Dimming **D11**

Wattstopper DLM - 1% Dimming* **DLM1**

(Not available with CP)

Wattstopper Fixture Sensor* **LMFS1**

Low Density - 1% Dimming

(Remote mounted sensor. See sensor layout guide) **LMFSD**

Wattstopper Fixture Sensor* **NLT1**

High Density - 1% Dimming

(Remote mounted sensor. See sensor layout guide) **NLT1**

Acuity nLight - 1% Dimming* **ENL1**

(Not available with CP)

Enlighted Smart Sensor - 1% Dimming* **ENL1**

(Remote mounted sensor. See sensor layout guide)

Encelium CLM Connected Lighting* **CLM1**

Module - 1% Dimming

Current NX Enabled - 1% Dimming* **NXE1**

(Not available with CP)

WaveLinX Pro - 1% Dimming* **WLXP**

(Remote mounted sensor. See sensor layout guide)

* (3' minimum length, 7' minimum length with FXH & EM. Not available with ALH & EM. G & ST mounting only.)

Mounting

Flush (FL0, GR0 & AF0) **G**

Lay-in Grid **ST**

Slot Tee / Tegular **TF**

Trim Flange Drywall **TF**

Mud-in Trimless Drywall **XFF**

Regressed (AF1, FL1, FL2, FL4, GR1, GR2 & GR4) **G**

Grid **XF**

Trimless Drywall **XF**

Factory Options

(See Ordering Guide on page 5 for ordering details for DC, EC, EM & ECD.)

Chicago Plenum **CP**

(Not available with flex whip)

Daylight Circuit **_DC**

Emergency Circuit **_EC**

Emergency Battery Pack† **_EM**

Emergency Control Device† **_ECD**

6' New York City Flex Whip (120V only) **FNY1**

6' New York City Flex Whip (277V only) **FNY2**

6' Flex Whip **FW**

Fixed Housing with Unlit Sliding Sleeves **SSB**

(Set of two unlit 12" sleeves. Fixed housing in straight runs only. FL2, FL4, GR2 & GR4 only. 3' minimum luminaire length.)

Finish

Matte White Housing **WH**

Luminaire Length **ft in**

Specify luminaire/row length in 1" increments **_ft_in**

(2' minimum length)

Pattern Options

Specify patterns based on wall-to-wall dimensions **PAT**

(See Pattern Configurations for example. Example: FSM4PR-ALH-FL2-625LF-35K-1C-120-LD1-G-WH-PAT-10-ICR-20-ICR-10)

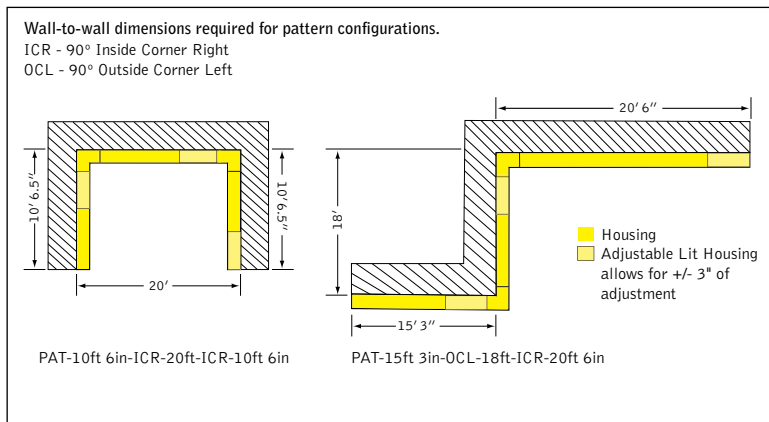


Options in orange qualify for the Quickship program. Run lengths in 1' increments, 1000' total. Refer to Quickship Guide for complete details.

fixture:

project:

PATTERN CONFIGURATIONS



TW 4' PERFORMANCE CHARTS

Lumen Output	Nominal Lumens	Tested System Watts	LPW			
			FL0	FL1	FL2	FL4
275LF	1100	13.30	83.2	80.3	77.5	74.8
375LF	1500	17.34	86.5	83.5	80.6	77.7
625LF	2500	27.84	89.5	86.4	83.4	80.5
875LF	3500	37.22	94.2	90.9	87.7	84.7
1000LF	4000	42.39	94.4	91.2	88.0	84.9

Based on 2700K, 80 CRI, 4' lengths. Lumen output may vary +/- 5%. Actual wattage may vary +/- 5%.

Lumen Output	Nominal Lumens	Tested System Watts	LPW					
			GR0	GR1	GR2	GR4	AF0	AF0
275LF	1100	13.30	89.8	87.2	84.7	82.1	93.4	87.7
375LF	1500	17.34	93.4	90.6	88.1	85.4	97.1	91.2
625LF	2500	27.84	96.7	93.9	91.2	88.4	100.5	94.4
875LF	3500	37.22	101.7	98.8	96.0	93.0	105.8	99.4
1000LF	4000	42.39	102.0	99.1	96.2	93.3	106.0	99.6

Based on 2700K, 80 CRI, 4' lengths. Lumen output may vary +/- 5%. Actual wattage may vary +/- 5%.

Lumen Multipliers

CRI	Multiplier
80+	1.00
90+	0.89

Wattage Multipliers

CCT	Multiplier
2700K	1.00
3000K	0.92
3500K	0.88
4000K	0.86
5000K	0.85
5700K	0.87
6500K	0.90



TUNABLE WHITE

- Luminaire Series** **FSM4PR**
- Seem 4 LED Perimeter
- Housing Type**
- Adjustable Lit Housing ALH
- (Allows for +/- 3" adjustment to overall run length. 3' minimum luminaire length.)
- Fixed Housing FXH
- (not recommended for wall to wall installations)
- Shielding**
- Flush Lens* FL0
- 1.0" Regress FL1
- 2.5" Regress FL2
- 4.0" Regress FL4
- Flush Grazer* GR0
- 1.0" Regress Grazer GR1
- 2.5" Regress Grazer GR2
- 4.0" Regress Grazer GR4
- Flush Asymmetric Room Fill* AF0
- 1.0" Regress Asymmetric Room Fill AF1
- *(Not available with Unlit Sliding Sleeves - SSB)
- Lumen Output**
- 275 Lumens per foot 275LF
- (3' min with DITW. 4' min with LT1.)
- 375 Lumens per foot 375LF
- (3' min with LT1.)
- 625 Lumens per foot 625LF
- 875 Lumens per foot* 875LF
- 1000 Lumens per foot* 1000LF
- *(3' 6" min with ALH)

- Color Temperature**
- Tunable White: 2700-6500K, 80+ CRI 2765T
- Tunable White: 2700-6500K, 90+ CRI 92765T

- Circuits & Zones**
- 1 Circuit, non-emergency 1C
- Consult Ordering Guide on page 5 for multiple circuiting and zoning options

- Voltage**
- 120/277 UNV Volt UNV

- Control System & Dimming Level**
- DALI - 1% Dimming D1TW
- (DT6 control. Requires two addresses, one for intensity & one for CCT tuning. Consult factory for DT8.)

- Acuity nLight - 1% Dimming** NLT1
- (Not available with CP)
- Enlighted Smart Sensor - 1% Dimming** ENL1
- (Remote mounted sensor. See sensor layout guide)
- †(Consult factory)

- Mounting**
- Flush Lay-in Grid G
- (FL0, GR0 & AF0) Slot Tee / Tegular ST
- Trim Flange Drywall TF
- Mud-in Trimless Drywall XFF
- Regressed Grid G
- (AF1, FL1, FL2, Trimless Drywall XF
- & GR4)

- Factory Options**
- (See Ordering Guide on page 5 for ordering details for DC, EC, EM & ECD.)
- Chicago Plenum CP
- (Not available with flex whip)
- Daylight Circuit _DC
- Emergency Circuit _EC
- Emergency Battery Pack† _EM
- Emergency Control Device† _ECD
- †(Consult factory)

- 6' New York City Flex Whip (120V only) FNY1
- 6' New York City Flex Whip (277V only) FNY2
- 6' Flex Whip FW
- Fixed Housing with Unlit Sliding Sleeves SSB
- (Set of two unlit 12" sleeves. Fixed housing in straight runs only. FL2, FL4, GR2 & GR4 only. 3' minimum luminaire length.)

- Finish** **WH**
- Matte White Housing WH
- Luminaire Length** **ft in**
- Specify luminaire/row length in 1" increments _ft_in
- (2' minimum length)

- Pattern Options** **PAT**
- Specify patterns based on wall-to-wall dimensions
- (See Pattern Configurations for example)

Example: FSM4PR-ALH-FL2-625LF-35K-1C-120-LD1-G-WH-PAT-10-ICR-20-ICR-10

Focal Point provides flexibility in meeting the needs of each project by integrating with several building lighting control systems. A variety of sensors, drivers and other components can be specified that allow the luminaires to communicate with wired and wireless networks. All zoning can be digitally reconfigured through the application software. Daylight harvesting, occupancy sensing, integration with HVAC systems, and individual controls enable the monitoring and modulating of light levels and temperature in order to save energy, reduce costs and maximize occupants' comfort. All Connected Solutions luminaires require a compatible building control system.†

Connected Solution	Ordering Code	Model #**	Protocol	Compatible Networks*	Occupancy & Daylight	Temperature Reporting	Communication to Luminaire	Drivers
 legrand [®] WATTSTOPPER [®]	DLM1	LMFC-011	DLM	DLM	Enabled	No	Wired 	Advance by Signify , Optotronic by eldoLED
	LMFS1	LMFS-601 & LMFI-111	DLM Wireless	DLM	Enabled	No	Wireless	Advance by Signify
LMFSD	LMFS-601	Optotronic by eldoLED (Dexal)						
 COOPER Lighting Solutions	WLXP	OEM-WAA	WaveLinx Wireless	WaveLinx Pro Trellix	Enabled	No	Wireless (WaveLinx Pro Wireless Area Controller)	Advance by Signify
 CRESTRON	D11	Specified Driver	DALI	Crestron Züm Wireless & SpaceBuilder	Enabled	No	Wired	eldoLED ECOdrive
	L11		0-10V					Advance by Signify
 ENCELIUM	CLM1	ZBHA-CLM-DIM-ENC	ZigBee	Encelium X Light Management System	Enabled	No	Wireless	Optotronic by eldoLED Advance by Signify
 Enlighted	ENL1	SU-5E-IOT	Enlighted RF	Enlighted	Integrated	Yes	Wireless	Advance by Signify
 LUTRON	LH1	LDE1	EcoSystem	Quantum, Energi Savr Node, Energi TriPak	Enabled	No	Wired	Lutron Hi-Lume
 nLIGHT	NLT1	nEPS-60-IO	nLight	nLight	Enabled	No	Wired 	eldoLED ECOdrive , eldoLED SOLOdrive
							Wireless	
 NA LIGHTING CONTROLS [™]	NXE1	NXFM-LV	NX	NX Distributed Intelligence	Enabled	No	Wired 	Optotronic by eldoLED

*Not all compatible networks may be listed. **For performance data and additional control system details please visit the connected solutions manufacturer websites. Primary drivers are listed in **bold**. To specify a particular driver please consult factory. †Controls systems supplied by others.

Ordering Guide



Direct Only Linear Circuitry, Zones & Factory Options

HOW TO USE THIS GUIDE

Fill out the worksheet on the following page to specify your requirements for circuitry, zones, and factory options.

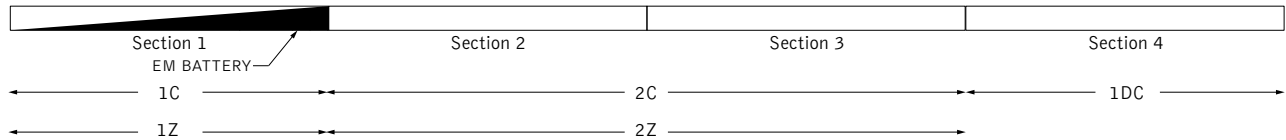
Refer to the run chart for standard run configurations, consult factory for custom configurations.

Complete the Totals / Ordering Codes at the bottom of the worksheet and add to your ordering logic on the cut sheet.

Submit the worksheet along with your order.

TOTAL RUN LENGTH: <u>32ft</u>		JOB NAME: _____			FIXTURE TYPE: _____				
EXAMPLE	HOUSING SECTION	SECTION LENGTH	SHARED ELECTRICAL FEED, NORMAL POWER			FACTORY OPTIONS			
			SWITCHING CIRCUIT	DIMMING ZONE	DAYLIGHT ZONE	SEPARATE ELECTRICAL FEEDS			EM
						DAYLIGHT CIRCUIT	EMERGENCY CIRCUIT	ECD	
1	8	1C	1Z					1EM	
2	8	2C	2Z						
3	8	2C	2Z						
4	8				1DC				
Totals / Ordering Codes		2C	2Z		1DC			1EM	

ORDERING: FSM4L-FL-625LF-35K- **2C2Z** -UNV-LD1-G2- **1DC-1EM** -WH-32ft



KEY	
C = Switching Circuit Switched Hot / Shared Neutral	DC = Daylight Circuit Switched Hot / Separate Neutral
Z = Dimming Zone Dimming Control Wires	EC = Emergency Circuit Switched Hot / Separate Neutral
DL = Daylight Zone Daylight Dimming Control Wires	EM = Emergency Battery Unswitched Hot / Shared Neutral
	ECD = Emergency Control Device Unswitched Hot / Separate Neutral

DEFAULTS

- Zones and Factory Options illuminate entire sections from 4' to 8' in length.
- One shared or isolated circuit and zone required per housing section.
- Limit of one EM or ECD per housing section.
- Additional electrical feed required for applications greater than three shared circuits and zones.
- Each DC, EC and ECD require an additional electrical feed.
- ECD not available in the same housing section as EC.
- Longer lead times and additional pricing may apply for custom run configurations.

CUSTOM LENGTHS

- If partial illumination of emergency or daylight section is required, indicate in ordering guide and add "partial illumination" in Order Notes. Drawing required.
- Engineering validation required, longer lead times may apply.

Ordering Guide Worksheet

Linear Circuitry, Zones & Factory Options



TOTAL RUN LENGTH: _____		JOB NAME: _____			FIXTURE TYPE: _____			
HOUSING SECTION	SECTION LENGTH	SHARED ELECTRICAL FEED, NORMAL POWER			FACTORY OPTIONS			EM
		SWITCHING CIRCUIT	DIMMING ZONE	DAYLIGHT ZONE	SEPARATE ELECTRICAL FEEDS			
DAYLIGHT CIRCUIT	EMERGENCY CIRCUIT				ECD			
1								
2								
3								
4								
5								
6								
7								
8								
9								
10								
11								
12								
13								
14								
15								
16								
17								
18								
19								
20								
Totals / Ordering Codes								

WORKSHEET

Combine to create Circuits & Zones ordering code

Enter as individual Factory Options

RUN CHART

Run length (ft)	Housing Configuration Section Lengths	Run length (ft)	Housing Configuration Section Lengths	Run length (ft)	Housing Configuration Section Lengths	Run length (ft)	Housing Configuration Section Lengths
9	5 + 4	21	8 + 8 + 5	33	8 + 8 + 8 + 5 + 4	45	8 + 8 + 8 + 8 + 8 + 5
10	6 + 4	22	8 + 8 + 6	34	8 + 8 + 8 + 6 + 4	46	8 + 8 + 8 + 8 + 8 + 6
11	7 + 4	23	8 + 8 + 7	35	8 + 8 + 8 + 7 + 4	47	8 + 8 + 8 + 8 + 8 + 7
12	8 + 4	24	8 + 8 + 8	36	8 + 8 + 8 + 8 + 4	48	8 + 8 + 8 + 8 + 8 + 8
13	8 + 5	25	8 + 8 + 5 + 4	37	8 + 8 + 8 + 8 + 5		
14	8 + 6	26	8 + 8 + 6 + 4	38	8 + 8 + 8 + 8 + 6		
15	8 + 7	27	8 + 8 + 7 + 4	39	8 + 8 + 8 + 8 + 7		
16	8 + 8	28	8 + 8 + 8 + 4	40	8 + 8 + 8 + 8 + 8		
17	8 + 5 + 4	29	8 + 8 + 8 + 5	41	8 + 8 + 8 + 8 + 5 + 4		
18	8 + 6 + 4	30	8 + 8 + 8 + 6	42	8 + 8 + 8 + 8 + 6 + 4		
19	8 + 7 + 4	31	8 + 8 + 8 + 7	43	8 + 8 + 8 + 8 + 7 + 4		
20	8 + 8 + 4	32	8 + 8 + 8 + 8	44	8 + 8 + 8 + 8 + 8 + 4		

Standard run configurations, consult factory for custom configurations.